



# LAB PRODUCT CATALOGUE

## OUR VISION

Being one of the world's leading Dental manufacturers, our Primary Goal is to reach out to the Dental Fraternity and offer Quality Products and Services, ensuring to best meet the expectations of our Health Care Professionals.

Apart from Introducing our Proven, State of the Art Dental Products, We will also thrive to reach out with our Future Research and Developments in order to satisfy the needs of the Ever Evolving & Dynamic Dental Industry.

SMILE..... THE WORLD NEEDS IT !

SHOFU DENTAL INDIA PVT LTD.

# CONTENTS

## **1.HIGH END PORCELAIN FUSED METAL CERAMICS (PFM) 7 - 28**

### **VINTAGE PRO :**

BASIC INFORMATION	8 - 9
LAYERING REPRESENTATION	10
FIRING INFORMATION	11

### **PASTE SYSTEM :**

VINTAGE PRO BASE OPAQUE PASTE	12
VINTAGE PRO SHADE OPAQUE PASTE	12

### **POWDER SYTEM :**

VINTAGE PRO BASE OPAQUE POWDER	13
VINTAGE PRO POWDER OPAQUE	13
VINTAGE PRO OPAQUE DENTIN	14
VINTAGE PRO BODY	15
VINTAGE PRO OPAL ENAMEL	16
VINTAGE PRO INCISAL/STANDARD ENAMEL	16
VINTAGE PRO OPAL EFFECT	17
VINTAGE PRO ENAMEL EFFECT	18
VINTAGE PRO COLOR EFFECT	19
VINTAGE PRO MARGIN	20
VINTAGE PRO GUM	21
VINTAGE PRO CERVICAL	21
VINTAGE PRO ADD - ON	22
VINTAGE PRO UNILAYER	22

### **LIQUID SYSTEM :**

VINTAGE MIXING LIQUID HC	23
VINTAGE PRO POWDER OPAQUE LIQUID	23
VINTAGE MARGIN HARDENING LIQUID	24
VINTAGE CPM MODELLING LIQUID	24

### **SET PACKAGING :**

VINTAGE PRO BASIC BUILD UP SET	25
VINTAGE PRO BASIC POWDER OPAQUE SET	25
VINTAGE PRO BASIC PASTE OPAQUE SET	26
VINTAGE PRO ENAMEL EFFECT SET	26
VINTAGE PRO STARTER SET PASTE OPAQUE	27
VINTAGE PRO COLOR EFFECT SET	28
VINTAGE PRO MARGIN SET	28

## **2.BASIC PORCELAIN FUSED METAL CERAMICS (PFM) 29 - 42**

### **VINTAGE HALO :**

BASIC INFORMATION	30
LAYERING REPRESENTATION	31
FIRING INFORMATION	32

**PASTE SYSTEM :**

VINTAGE MP BASE OPAQUE PASTE 33

VINTAGE MP SHADE OPAQUE PASTE 33

**POWDER SYTEM :**

VINTAGE HALO POWDER OPAQUE 34

VINTAGE HALO OPAQUE DENTIN 35

VINTAGE HALO BODY 36

VINTAGE HALO OPAL ENAMEL 37

VINTAGE HALO INCISAL/STANDARD ENAMEL 37

VINTAGE HALO OPAL EFFECT 38

VINTAGE HALO ENAMEL EFFECT 39

VINTAGE HALO COLOR EFFECT 39

VINTAGE HALO MARGIN 40

VINTAGE HALO ADD - ON 40

**LIQUID SYSTEM :**

VINTAGE MIXING LIQUID HC 41

VINTAGE HALO OPAQUE LIQUID 41

VINTAGE HALO PAINT OPAQUE LIQUID 41

VINTAGE MP OPAQUE LIQUID 42

VINTAGE MARGIN HARDENING LIQUID 42

VINTAGE CPM MODELLING LIQUID 42

**3.ZIRCONIA  
LAYERING CERAMICS :****43 - 58****VINTAGE ZR :**

BASIC INFORMATION 44

LAYERING REPRESENTATION 45

FIRING INFORMATION 46

**PASTE SYSTEM :**

VINTAGE ZR OPAQUE LINER 47

**POWDER SYSTEM :**

VINTAGE ZR OPAQUE DENTIN 48

VINTAGE ZR BODY 48

VINTAGE ZR OPAL ENAMEL 49

VINTAGE ZR OPAL EFFECT 49

VINTAGE ZR ENAMEL EFFECT 50

VINTAGE ZR GUM 50

VINTAGE ZR CERVICAL TRANSLUSCENT 51

VINTAGE ZR COLOR EFFECT 52

VINTAGE ZR MARGIN 52

VINTAGE ZR MARGIN EFFECT 53

VINTAGE ZR ADD-ON 53

**LIQUID SYSTEM :**

VINTAGE MIXING LIQUID HC 54

VINTAGE AL/ZR OPAQUE LINER LIQUID 54

VINTAGE CPM MODELLING LIQUID 55

**SET PACKAGING :**

VINTAGE ZR AB SET 55

VINTAGE ZR CD SET 56

VINTAGE ZR WHITENING SET 56

VINTAGE ZR ENAMEL EFFECT SET 57

VINTAGE ZR COLOR EFFECT SET 57

VINTAGE ZR MARGIN PORCELAIN SET 58



#### **4.VINTAGE HALO, PRO & ZR STAINING & GLAZING SYSTEM :**

**59 - 64**

##### **VINTAGE ART :**

##### **STAINING SYSTEM :**

VINTAGE ART BASE COLOR STAINS	61
VINTAGE ART COLOR STAINS	62
VINTAGE ART SHADE STAINS	63
VINTAGE ART STAIN LIQUID	64

##### **GLAZING SYSTEM :**

VINTAGE ART GLAZE PASTE	64
-------------------------	----

#### **5.LITHIUM DI SILICATE GLASS CERAMICS :**

**65 - 80**

##### **VINTAGE LD :**

BASIC INFORMATION	66
LAYERING TECHNOQUE REPRESENTATIONS	67
FIRING INFORMATION	68
PRESS INGOT SYSTEM :	69
VINTAGE LD MEDIUM OPACITY INGOTS	69
VINTAGE LD LOW OPACITY INGOTS	69
VINTAGE LD MEDIUM TRANSLUSCENT INGOTS	70
VINTAGE LD TRANSLUSCENT INGOTS	70
VINTAGE LD PRESS TRIAL KIT	70
LAYERING POWDER SYTEM :	
VINTAGE LD OPAQUE DENTIN	72
VINTAGE LD BODY	72
VINTAGE LD OPAL ENAMEL	73
VINTAGE LD OPAL EFFECT	73
VINTAGE LD ENAMEL EFFECT	74
VINTAGE LD COLOR EFFECT	74
VINTAGE LD GUM	75
VINTAGE LD ADD - ON	75

##### **LIQUID SYSTEM :**

VINTAGE MIXING LIQUID HC	75
--------------------------	----

##### **STAINING SYSTEM : VINTAGE ART STAINS**

VINTAGE ART LF STAINS (LOW FUSING)	77
VINTAGE ART LF STAIN LIQUID (LOW FUSING)	78

##### **GLAZING SYSTEM :**

VINTAGE ART LF GLAZE PASTE (LOW FUSING)	78
--	----

##### **SET PACKAGING :**

VINTAGE LD BASIC SET	79
VINTAGE LD ENAMEL EFFECT SET	79
VINTAGE ART LF EFFECT SET	80

#### **6.CROWN & BRIDGE COMPOSITE :**

**81 - 94**

##### **CERAMAGE**

BASIC INFORMATION	82-83
LAYERING REPRESENTATION	84
CURING INFORMATION	85

##### **INDIRECT COMPOSITE PASTE SYSTEM :**

CERAMAGE UNIVERSAL PRE OPAQUE	86
CERAMAGE UNIVERSAL OPAQUE	86
CERAMAGE OPAQUE DENTIN	87
CERAMAGE CERVICAL	87
CERAMAGE BODY	88
CERAMAGE INCSIAL/ENAMEL	88
CERAMAGE TRANSLUSCENT	89
CERAMAGE CONCENTRATE	90
CERAMAGE FLOWABLE	91
CERAMAGE GUM	91

**LIQUID SYSTEM :**

CERAMAGE MODELLING LIQUID 92

CERAMAGE SPACER &  
SEPERATOR 92

CERAMAGE OXY BARRIER 92

**STAINING SYSTEM :**

VINTAGE LITE ART STAINS 94

VINTAGE LITE ART CLEAR  
LIQUID 94**95 - 98****7.PRIMING & BONDING  
SYSTEMS :**

AZ PRIMER 96

PORCELAIN PRIMER 96

M.L PRIMER 96

PORCELAIN REPAIR SYSTEM :  
P & R KIT 97

CERA RESIN BOND SET 98

**8. ABRASIVE SYSTEM :****99 - 118****A. SYSTEM KITS :**

CERAMAGE POLISHING KIT 100

ZILMASTER TECHNIQUE KIT &  
ASSORTMENT 101**B.INDIVIDUAL ABRASIVE  
INFORMATION :**

MANDRELS HP 102

DURA GREEN & DURA GREEN  
FINE STONES 103DURA GREEN UNMOUNTED  
WHEELS 104

DURA WHITE STONES 105-106

DURA GREEN DIA 107

ZILMASTER 108-109

COMPOMASTER 110-111

BROWNIE, GREENIE & SUPER  
GREENIE 112-113

SOFT CUT 114

CERAMISTE 115

DURA POLISH 116

DURA POLISH DIA 117

FISSURE CARBIDE BURS HP/FG 118

**9.MISCELLANEOUS :****119 - 127**

SHOFU ADJUSTER 120

DIAMOND DRESSER 120

PORCELAIN BRUSHES 121

VINTAGE SHADE GUIDE 121

UNI BRUSH 122

SOLIDILITE 250V 123

SUBLITE V 124

HALOGEN LAMP 124

POST STAND P &amp; POST SET 125

CERAMOSONIC S 126

LAB AZ (OIL FREE) HANDPIECE  
SET 127



## **1.HIGH END PORCELAIN FUSED METAL CERAMICS (PFM)**

**VINTAGE PRO**



## PRESENTING THE HIGH END STATE OF THE ART TECHNOLOGY OF PORCELAIN FUSED METAL CERAMICS

### BASIC INFORMATION

Based on the high-fusing vintage porcelain systems, the new VINTAGE PRO metal ceramic is characterized by professional design, efficiency and aesthetics. The excellent properties of the well-established SHOFU PFM product line has been systematically optimized, and its porcelain base combined with new materials - for even greater ease of use, higher fi ring stability and naturally opalescent shades.

#### Greater Predictability

Matched to conventional and CAD / CAM PFM alloys with a CTE range of  $13.5$  to  $14.8 \times 10^{-6} \text{ K}^{-1}$  ( $25 - 500^\circ \text{C}$ )

Outstanding color, shape and fi ring stability, even after several fi rings

Better bonding strength with all PFM alloys using the orange-colored base opaque

#### Higher Efficiency

Predictable aesthetics and easy handling with modified two-layer technique

New, extremely fine powder opaque with effortless application and masking characteristics

Optimal working properties and build up stability

#### More Versatility

Versatile range of opalescent and fluorescent effect powders

True-to-nature shade system reproducing all VITA\* classical shades

Additional bleaching shades available (whitening shades)

## **BENEFITS :**

### **Ideal for beginners and experts**

- Impressively easy to handle and less prone to errors
- Systematic co-ordination of all the individual components
- Ensures life-like aesthetics by easily simulating the dentin-enamel structure of natural teeth with the modified two-layer technique

### **Creativity at its best**

- Offers a versatile spectrum of highly fluorescent powders for the margin and cervical areas
- Opalescent and translucent effect powders help to design intricate incisal zones that harmonize with the individual patient
- The extensive array of colors enables the ceramist to meet aesthetic challenges and realize even the most complicated characterizations

### **Life-like opalescence and vitality**

- The optical properties of natural teeth are precisely reproduced with the opalescent and translucent powders with minimum effort

### **Compatible with a greater variation of alloys**

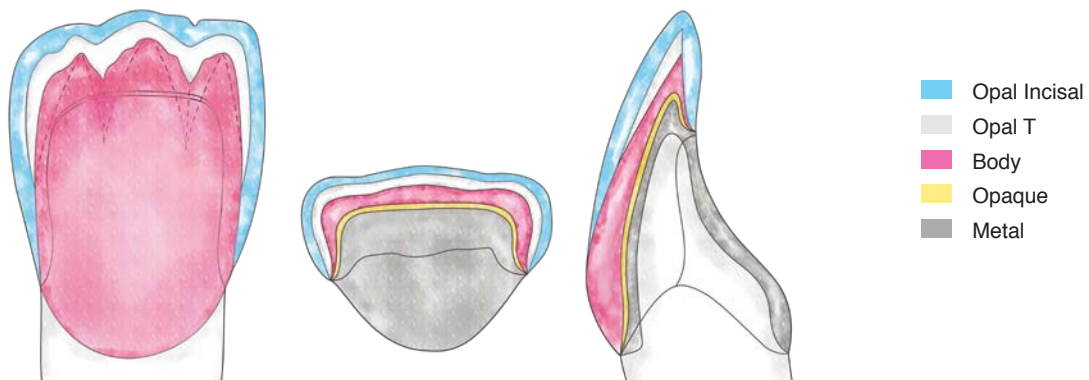
- With a firing temperature of approximately 900 °C, it is ideal for veneering non-precious alloy frameworks
- It is also suitable for veneering high gold, reduced gold and palladium based PFM alloys
- Thus this stable porcelain system is compatible with all types of conventionally cast alloys and ideal for CAD / CAM or sintered metal framework

### **Perfectly streamlined**

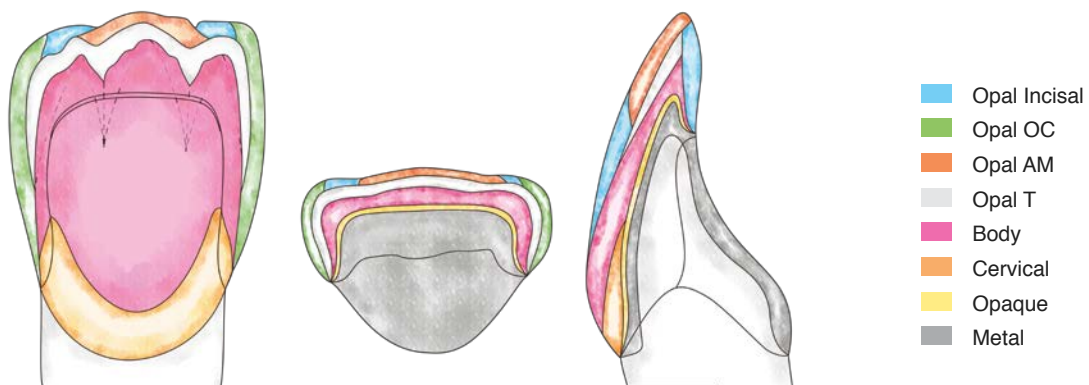
- Comprises all the colors required to accurately reproduce the 16 VITA classical shades as well as SHOFU's extended 4 whitening shades to match standard patient cases
- An extended line of opal, translucent, effect and margin powders designed to mimic the shade nuances and optical variations seen in natural teeth

# Layering Systems

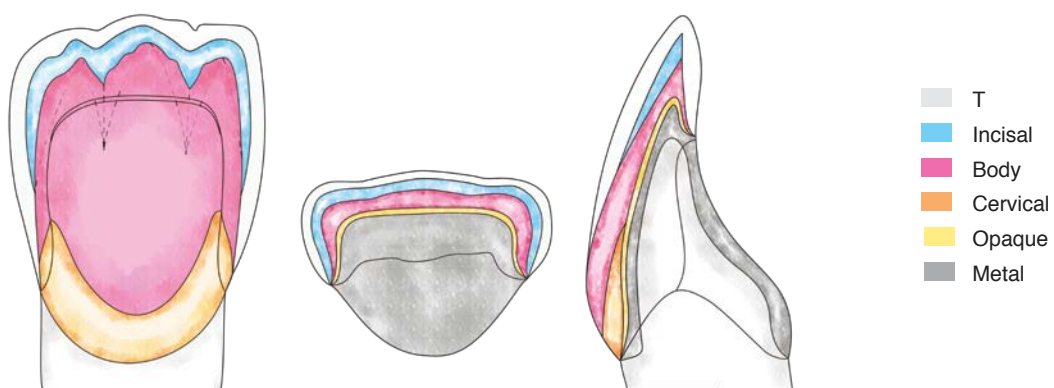
## Standardised Layering with Opal Porcelains



## Customised Layering with Opal Porcelains



## Standardised Layering with Incisal Porcelains without Opalescence



# Firing Schedule

	Drying temp. °C	Drying min.	Preheating min.	Vacuum start °C	Inc. temp. °C/min.	Final temp. °C	Vacuum end °C	Hold * min.
Base Opaque Powder	500	5	1	500	60	960	960	1
Shade Opaque Powder	500	5	1	500	60	950	950	1
Base Opaque Paste	500	5	1	500	60	960	960	1
Shade Opaque Paste	500	5	1	500	60	950	950	1
1. Margin	650	5	1	650	50	940	940	0.5
2. Margin	650	5	1	650	50	930	930	0.5
1. Cervical, Body, Opaque Dentin, Opal Incisal, Opal Effect, Enamel Effect, Uni-Layer**, Color Effect	650	5	2	650	50	910	910	0.5
2. Cervical, Body, Opaque Dentin, Opal Incisal, Opal Effect, Enamel Effect, Uni-Layer**, Color Effect	650	5	2	650	50	900	900	0.5
VINTAGE Art Glaze	600	5	2	-	60	870	-	-
Gum	650	7	2	650	50	900	900	0.5
Gum-Glaze	650	5	2	-	60	900	-	0.5
Correction	650	5	1	650	60	870	870	0.5
Correction-Glaze	650	5	2	-	60	870	-	0.5

\* Hold with vacuum

**Note:** Please note that these data are only guidelines. If your firing results are not as good as they would be under optimal conditions in terms of surface quality, transparency or gloss, the parameters will have to be adjusted.

Firing conditions may vary, depending on the design and operating voltage of the porcelain furnace used. It is essential to carry out test firings, as described on page 5 of these instructions, before using the porcelains for actual restorations.

When applying large amounts of Paste Opaque or Powder Opaque, select a longer drying time at the furnace entrance and a longer preheating time, in order to thoroughly burn the liquid components.

When firing large restorations, it is also advisable to extend the drying time.

When applying porcelain layers > 1.5 mm in thickness to non-precious alloys or alloys with a CTE of >  $14.5 \times 10^{-6} \text{K}^{-1}$ , longterm cooling after firing may be beneficial, beginning with the 1st body firing.



## PASTE SYSTEM :

### VINTAGE PRO BASE OPAQUE PASTE

- Metal frameworks can be masked using either paste opaque or powder opaque.
- Paste opaque is available in ready to use consistency and if necessary the consistency could be altered using VINTAGE PRO Paste Opaque Liquid.
- Its fine particle structure and orange golden color, base opaque provides a pleasant warm Hue and an excellent bond strength especially when applied to non precious alloys.
- To be applied as a thin wash layer.

#### Ordering Information :

VINTAGE PRO Base Opaque Paste

SHADE	PN (6g)
Universal	P0001



### VINTAGE PRO SHADE OPAQUE PASTE

- Designed to be applied on the fired base opaque and efficiently mask the underlying metal coping.
- Ideal viscosity can be obtained by mixing with VINTAGE PRO Opaque Liquid
- Available in 21 basic Opaque shades

#### Ordering Information :

VINTAGE PRO Shade Opaque Paste

SHADE	PN (6g)
A1O	P0002
A2O	P0003
A3O	P0004
A3.5O	P0005
A4O	P0006
B1O	P0007
B2O	P0008
B3O	P0009
B4O	P0010

SHADE	PN (6g)
C1O	P0011
C2O	P0012
C3O	P0013
C4O	P0014
D2O	P0015
D3O	P0016
D4O	P0017
W0O	P0018
W1O	P0019
W2O	P0020
W3O	P0021



## POWDER SYSTEM

### VINTAGE PRO BASE OPAQUE POWDER

- Powder Opaque is mixed with Vintage PRO Powder Opaque Liquid in a ratio of 2 : 1 until it reaches a Creamy consistency.
- The consistency and firing behaviour of the paste and powder system are similar.
- The use of VINTAGE PRO Opaque Liquid considerably increases the working time of powder opaque, compared to conventional mixing liquids.

#### Ordering Information :

VINTAGE PRO Base Paste Opaque

SHADE	PN (15g)	PN (50g)
Universal	P0031	P0061



### VINTAGE PRO POWDER OPAQUE

- The PRO Opaque Powder has been refined and when mixed with the specially developed modelling liquid gives a smooth and paste like consistency during application.
- A thin wash layer is applied initially and based on the need of further masking a second layer could be applied to achieve an optimum coverage of the metal.
- Available in 21 basic opaque shades and 7 Opaque modifier shades

#### Ordering Information :

VINTAGE PRO Powder Opaque

SHADE	PN (15g)	PN (50g)
W00	P0048	P0078
W10	P0049	P0079
W20	P0050	P0080
W30	P0051	P0081
A10	P0032	P0062
A20	P0033	P0063
A30	P0034	P0064
A3.50	P0035	P0065
A40	P0036	P0066
B10	P0037	P0067
B20	P0038	P0068
B30	P0039	P0069
B40	P0040	P0070
C10	P0041	P0071

SHADE	PN (15g)	PN (50g)
C20	P0042	P0072
C30	P0043	P0073
C40	P0044	P0074
D20	P0045	P0075
D30	P0046	P0076
D40	P0047	P0077



## VINTAGE PRO OPAQUE DENTIN

- The PRO Opaque Dentin porcelain is designed to replicate areas of deep dentin where the color of the opaque appears too dominant and areas requiring low layer thickness such as pontics or incisal edges so that the outline of metal edges do not show through.
- The powder exhibits reflection, brightness and color match identical to natural teeth thus plays a vital role in the overall aesthetic harmony more importantly in the above mentioned conditions.
- Available in 18 shades

### Ordering Information :

VINTAGE PRO Opaque Dentin

SHADE	PN (15g)	PN (50g)
OD-A1	P0211	P0231
OD-A2	P0212	P0232
OD-A3	P0213	P0233
OD-A3.5	P0214	P0234
OD-A4	P0215	P0235
OD-B1	P0216	P0236
OD-B2	P0217	P0237
OD-B3	P0218	P0238
OD-B4	P0219	P0239

SHADE	PN (15g)	PN (50g)
OD-C1	P0220	P0240
OD-C2	P0221	P0241
OD-C3	P0222	P0242
OD-C4	P0223	P0243
OD-D2	P0224	P0244
OD-D3	P0225	P0245
OD-D4	P0226	P0246
OD-W0	P0227	P0247
OD-N	P0228	P0248



## VINTAGE PRO BODY

- For optimal control of tooth size, shape and position, SHOFU recommends to initially build up the body porcelains to full contour, then briefly condense the material and use the cut back technique to precisely reduce the dentin in accordance with the natural tooth anatomy.
- The VINTAGE PRO Body porcelain shades exhibit excellent optical properties to best replicate natural dentin shades.
- Mixed with VINTAGE HC Liquid to obtain an ideal and excellent working consistency for an accurate build up and shaping of the porcelain.
- Available in 20 shades

### Ordering Information :

VINTAGE PRO Body

SHADE	PN (15g)	PN (50g)	PN (200g)
A1B	P0121	P0151	P0181
A2B	P0122	P0152	P0182
A3B	P0123	P0153	P0183
A3.5B	P0124	P0154	P0184
A4B	P0125	P0155	P0185
B1B	P0126	P0156	P0186
B2B	P0127	P0157	P0187
B3B	P0128	P0158	P0188
B4B	P0129	P0159	P0189

SHADE	PN (15g)	PN (50g)	PN (200g)
C1B	P0130	P0160	P0190
C2B	P0131	P0161	P0191
C3B	P0132	P0162	P0192
C4B	P0133	P0163	P0193
D2B	P0134	P0164	P0194
D3B	P0135	P0165	P0195
D4B	P0136	P0166	P0196
W0B	P0137	P0167	P0197
W1B	P0138	P0168	P0198
W2B	P0139	P0169	P0199
W3B	P0140	P0170	P0200



## VINTAGE PRO OPAL ENAMEL

- The PRO Enamel Porcelain powder has a structure and particle distribution to yield a very Natural Enamel like appearance.
- This property enables the Bluish translucency and diffused orange color of natural enamel to be reproduced without the addition of color effects.
- Thus vital and aesthetic restorations can be produced using a simple two layer technique (Body & Enamel).
- Available in 6 shades

### Ordering Information :

VINTAGE PRO Opal Enamel

SHADE	PN (15g)	PN (50g)	PN (200g)
OPAL 55	P0281	P0291	P0301
OPAL 56	P0282	P0292	P0302
OPAL 57	P0283	P0293	P0303
OPAL 58	P0284	P0294	P0304
OPAL 59	P0285	P0295	P0305
OPAL 60	P0286	P0296	P0306



## VINTAGE PRO INCISAL/STANDARD ENAMEL

- The PRO Standard Enamel is a non opal material with a greyish appearance which is often exhibited in old and worn out teeth.
- A layer of translucent powder is recommended to be used along with standard enamel to give a more natural appearance.
- Standard Enamel porcelain is also recommended in restorations which have a complete metal backing to the incisal edge.
- Available in 4 shades

### Ordering Information :

VINTAGE PRO Opal Enamel

SHADE	PN (15g)	PN (50g)	PN (200g)
57	P0251	P0261	P0271
58	P0252	P0262	P0272
59	P0253	P0263	P0273
60	P0254	P0264	P0274



## VINTAGE PRO OPAL EFFECT

The PRO Opal Effect offers the expertise to create those natural like improvisations which offers Precise detailing and an edge to reproduce life like restorations.

### Ordering Information :

VINTAGE PRO Opal Effect

SHADE	PN (15g)	PN (50g)
OPAL WE	P0311	P0321
OPAL OC	P0312	P0322
OPAL AM-R	P0313	P0323
OPAL AM-Y	P0314	P0324
OPAL AM-V	P0315	P0325
OPAL MIV	P0316	P0326
OPAL WB	P0317	P0327
OPAL T	P0318	P0328
OPAL SL	P0319	P0329



### Available in 9 shades :

**Opal WE (White Effect)** - Has a duller and whiter appearance than Opal occlusal and is used to create Cusp tips on molars or demineralised areas in anterior teeth.

**Opal OC (Occlusal)** - Used to emphasize milky dull areas of Occlusal surfaces and can also be used to Brighten the interproximal areas of anterior teeth.

- **Opal AM-R** (Amber Red)
- **Opal AM-Y** (Amber Yellow)
- **Opal AM-V** (Amber Violet)
- **Opal MIV** (Mamellon Ivory)
- **Opal WB** ( White Band)

**Opal T** - Slightly Translucent material often used in incisal area between body & opal enamel to create depth of shade

**Opal SL (Super Translucent)** - Most opalescent material with a bluish translucency, duller than opal T used to create an increased three dimensional appearance between Body and Opal Incisal porcelain.

## VINTAGE PRO ENAMEL EFFECT

The PRO Enamel Effect porcelain provides various levels of translucency in order to reproduce the smallest of detailing and individual characterisations of enamel color which Enhances the Overall aesthetic harmony of the restoration.

### Ordering Information :

VINTAGE PRO Enamel Effect

SHADE	PN (15g)	PN (50g)	PN (200g)
BT	P0331	P0351	-
PT	P0332	P0352	-
GT	P0333	P0353	-
OT	P0334	P0354	-
YT	P0335	P0355	-
BG	P0336	P0356	-
WT	P0337	P0357	-
AC-T	P0338	P0358	-
BC-T	P0339	P0359	-
CC-T	P0340	P0360	-
DC-T	P0341	P0361	-
T	P0342	P0362	P0391
T-GLASS	P0343	P0363	P0392



### Available in 13 varieties of translucencies:

- **BT** - Blue Translucent
- **PT** - Pink Transpa
- **GT** - Grey Transpa
- **OT** - Orange Transpa
- **YT** - Yellow Transpa
- **BG** - Blue Grey
- **WT** - White Transpa
- **AC-T** - A Cervical Trans
- **BC-T** - B Cervical Trans
- **CC-T** - C Cervical Trans
- **DC-T** - D Cervical Trans
- **T** - Translucent
- **T-GLASS** - Higher Translucent



## VINTAGE PRO COLOR EFFECT

The PRO Color Effect offers precise color Detailing of the incisal areas considering the fact that Natural enamel exhibits various wavelengths of Colors perceived by human eyes.

### Ordering Information :

VINTAGE PRO Color Effect

SHADE	PN (15g)	PN (50g)
MP	P0401	P0421
MY	P0402	P0422
MIV	P0403	P0423
RED	P0404	P0424
Y	P0405	P0425
O	P0406	P0426
G	P0407	P0427
W	P0408	P0428
BR	P0409	P0429
BL	P0410	P0430
RED-L	P0411	P0431



### Available in 11 shades :

- **MP** - Mamellon Pink
- **MY** - Mamellon Yellow
- **MIV** - Mamellon Ivory
- **Red** - Reddish
- **Y** - Yellow
- **O** - Orange
- **G** - Grey
- **W** - White
- **BR** - Brown
- **BL** - Blue
- **RED-L** - Red Lite

## VINTAGE PRO MARGIN

- VINTAGE PRO margin is characterised by high pasticity and fluorensence, in contrast to other porcelains in this system.
- Is used when an all ceramic soulder is required, where the metal is removed on the labial aspect of the cervical area to achieve an adequate space for the porcelain shoulder of 0.5 - 0.7 mm.
- Low shrinkage and excellent shade stability ensures an outstanding accuracy of fit.
- Thus margin porcelains offer greater strength and toughness against the stresses occurring at the shoulder margins and efficiently prevents black effect which commonly occurs due to metal exposure at the margins.
- Offers Ideal placement when best mixed with the VINTAGE Margin Hardening Liquid which when dried toughens the porcelain making it easy to remove the frame from the abutment.

### Ordering Information :

VINTAGE PRO Margin

SHADE	PN (15g)
A1M	P0091
A2M	P0092
A3M	P0093
A3.5M	P0094
A4M	P0095
B2M	P0096
B4M	P0097
C2M	P0098
C4M	P0099
D3M	P0100
W0M	P0101

SHADE	PN (15g)
NM	P0102
LPM	P0103
DPM	P0104
MLM	P0105
MDM	P0106
ORM	P0107
BRM	P0108
CLM	P0109



- Available in 12 basic margin shades and 7 margin effect shades
- The margin effect shades are used to intensify the basic margin shades:
  - **LP-M** : Lite Pink Margin Effect
  - **DP-M** : Dark Pink Margin Effect
  - **ML-M** : Margin Lite Effect
  - **MD-M** : Margin Dark Effect
  - **OR-M** : Orangish Margin Effect
  - **BR-M** : Brownish Margin Effect
  - **CL-M** : Clear Margin Effect

## VINTAGE PRO GUM

The PRO GUM porcelain offers an excellent range and armamentarium to best replicate gingival shades as close to the remaining natural gingiva thus enhancing the overall aesthetics of the restoration.

### Ordering Information :

VINTAGE PRO Add-On

SHADE	PN (15g)	PN (50g)
LP	P0461	P0471
DP	P0462	P0472
V	P0463	P0473
OR	P0464	P0474
R	P0465	P0475
P	P0466	P0476



### Available in 6 Types :

- GUM - LP : Lite Pink
- GUM - DP : Dark Pink
- GUM - V : Violet
- GUM - OR : Orange
- GUM - R : Red
- GUM - P : Pink

## VINTAGE PRO CERVICAL

Porcelains designed to intensify the shades of cervical areas by mixing with the Body porcelains.

### Ordering Information :

VINTAGE PRO Cervical

SHADE	PN (15g)	PN (50g)
AC	P0111	P0115
BC	P0112	P0116
CC	P0113	P0117
DC	P0114	P0118



## VINTAGE PRO ADD-ON

The PRO Add-On porcelain allows you to efficiently do final corrections or Add On's to Mask any deficiency / defects after contouring or self-glazing.

### Ordering Information :

VINTAGE PRO Add-On

SHADE	PN (15g)
B	P0482
T	P0481
CPM	P0483
CPM-Fine	P0484



### Available in 4 Types :

- **Add-On B** : Body
- **Add-On T** : Translucency
- **CPM** : Cervical Porcelain Margin
- **CPM-FINE** : Cervical Porcelain Margin Fine

## VINTAGE PRO UNILAYER

### Ordering Information :

VINTAGE PRO Unilayer

SHADE	PN (50g)	PN (200g)
HT	P0451	P0453
LT	P0452	P0454



### Available in 2 Types :

- **HT** - High Translucent
- **LT** - Low Translucent

## LIQUID SYSTEM

### VINTAGE MIXING LIQUID HC

- The VINTAGE Mixing Liquid HC provides an ideal consistency and improves the overall handling properties of all porcelain powders.
- Can be used singularly or mixed with distilled water to achieve the desired consistency.

#### Ordering Information :

VINTAGE Mixing Liquid HC

QTY	PN
50 ml	9613
500 ml	9614



### VINTAGE PRO POWDER OPAQUE LIQUID

- The VINTAGE PRO Powder Opaque Liquid is a water based medium which improves the overall workability when mixed along with the PRO opaque powder while masking the Inner metal Coping.
- Thus it provides a longer working time than the other modelling liquids.

#### Ordering Information :

VINTAGE PRO Powder Opaque Liquid

QTY	PN
50 ml	P0492
500 ml	P0493



## VINTAGE MARGIN HARDENING LIQUID

The VINTAGE Margin Hardening Liquid is a mixing liquid for margin porcelains.

When dried with a dryer, this liquid hardens the margin porcelains making it easy to remove the frame from the abutment tooth.

### Ordering Information :

VINTAGE Margin Hardening Liquid

QTY	PN
50 ml	9615



## VINTAGE CPM MODELLING LIQUID

The VINTAGE CPM Modelling Liquid is a mixing liquid for Marginal porcelain and correction porcelain.

### Ordering Information :

VINTAGE CPM Modelling Liquid

QTY	PN
3 ml	7642



## SET PACKAGING

### VINTAGE PRO BASIC BUILD UP SET

Contains the components for metal ceramic restorations in the shades A1-14, B2, B3 & D3 (Powder & Paste Opaque are not included)

#### Ordering Information :

VINTAGE PRO Basic Build Up Set

PACKAGING	PN
Set	P0501



#### Packaging

Cervical porcelain (15g) x 3 : AC, BC, DC

Opaque dentin (15g) x 8 : ODA1, ODA2, ODA3, ODA3.5, ODA4, ODB2, ODB3, ODD3

Body (15g) x 8 : A1B, A2B, A3B, A3.5B, A4B, B2B, B3B, D3B

Opal enamel (15g) x 4 : Opal 57, Opal 58, Opal 59, Opal 60

Opal Effect (15g) x 1 : Opal T

Add-On (15g) x 1 : Add-On T

### VINTAGE PRO BASIC POWDER OPAQUE SET

Ready to use Powder opaque for masking metal frameworks in the shades A1-A4, B2, B3 & D3

#### Ordering Information :

VINTAGE PRO Basic Powder Opaque Set

PACKAGING	PN
Set	P0502



#### Packaging :

Base Opaque Powder 15g x 1

Shade Opaque Powder 15g x 8 : A1O, A2O, A3O, A3.5O, A4O, B2O, B3O, D3O

Powder Opaque Liquid 20 ml x 1



## VINTAGE PRO BASIC PASTE OPAQUE SET

Ready to use paste opaque for masking metal frameworks in the shades A1-A4, B2, B3 & D3

### Ordering Information :

VINTAGE PRO Basic Paste Opaque Set

PACKAGING	PN
Set	P0503



### Packaging :

Base Opaque Paste 6g x 1

Shade Opaque Paste 6g x 8 : A1O, A2O, A3O, A3.5O, A4O, B2O, B3O, D3O

Paste Opaque Liquid 20 ml x 1

## VINTAGE PRO ENAMEL EFFECT SET

Incisal and Translucent powders for an individual , natural light transmission in the Incisal area.

### Ordering Information :

VINTAGE PRO Enamel Effect Set

PACKAGING	PN
Set	P0507



### Packaging :

Opal Enamel 15g x 2 : Opal 55, Opal 56

Opal Effect 15g x 8 : MI, WB, WE, OC, AM-R, AM-Y, AM-V, SL

Enamel Effect 15g x 10 : BT, PT, GT, OT, YT, AC-T, BC-T, CC-T, DC-T, T-GLASS

## VINTAGE PRO STARTER SET PASTE OPAQUE

### Ordering Information :

VINTAGE PRO Starter Set Paste Opaque

PACKAGING	PN
A2/A3 Set	P0504
A2 Set	P0505
A3 Set	P0506



### Packaging :

VINTAGE PRO Starter Set A2/A3 Paste Opaque :

Base Paste Opaque x 1,  
 Paste Opaque 6g x 2 each,  
 Opaque Dentin 15g x 2 each,  
 Body 15g x 2 each,  
 Opal Enamel 15g x 2 each,  
 Opal Effect 15g x 1,  
 Enamel Effect 15g x 1,  
 VINTAGE Mixing Liquid HC 15ml x 1,  
 VINTAGE PRO Paste Opaque Liquid 20ml x 1

### Packaging :

VINTAGE PRO Starter Set A2  
 Base Opaque Paste 6g x 1  
 Shade Opaque Paste 6g x 1 : A2O  
 Cervical Porcelain 15g x 1 : AC  
 Opaque Dentin A2 15g x 1 : ODA2  
 Body A2 15g x 1 : A2B  
 Opal Enamel 15 g x 1 : Opal 58  
 Opal Effect 15g x 1 : Opal T  
 Vintage HC modelling Liquid 30ml x 1  
 Vintage Pro Paste Opaque Liquid 20 ml x 1

### Packaging :

VINTAGE PRO Starter Set A3  
 Base Opaque Paste 6g x 1  
 Shade Opaque Paste 6g x 1 : A3O  
 Cervical Porcelain 15g x 1 : AC  
 Opaque Dentin A2 15g x 1 : ODA3  
 Body A2 15g x 1 : A3B  
 Opal Enamel 15 g x 1 : Opal 58  
 Opal Effect 15g x 1 : Opal T  
 Vintage HC modelling Liquid 30ml x 1  
 Vintage Pro Paste Opaque Liquid 20 ml x 1

## VINTAGE PRO COLOUR EFFECT SET

For Individual effects in the dentin and cervical areas.

Contains 15 Bottles.

**Ordering Information :**  
VINTAGE PRO Color Effect Set

PACKAGING	PN
Set	P0508



### Packaging :

Color Effect 15g x 9 : MP, MIV, MY, RED, O, Y, G, Br, BI  
Gum Shades 15g x 6 : Gum-LP, Gum-P, Gum-DP, Gum-Or, Gum-R, Gum-V

## VINTAGE PRO MARGIN SET

Contains highly fluorescent margin powders in the shades WO TO D4 as well as various effect powders.

**Ordering Information :**  
VINTAGE PRO Margin Set

PACKAGING	PN
Set	P0509



### Packaging :

Margin Porcelain 15g x 12 : A1M, A2M, A3M, A3.5M, A4M, B2M, B3M, C2M, C3M, D3M, W0M, NM  
Margin Effects 15g x 5 : LPM, DPM, OrM, MLM, MOM  
Vintage Margin Hardening Liquid 50ml x 1  
Vintage Margin Isolation Liquid Pen 7m x 1



## **2.BASIC PORCELAIN FUSED METAL CERAMICS (PFM)**

**VINTAGE HALO**





## PORCELAIN FUSED METAL CERAMICS COMPATIBLE WITH A WIDE RANGE OF METAL ALLOYS

### BASIC INFORMATION :

VINTAGE HALO, an advanced metal bonded porcelain system was designed after extensive research which led to greater understanding of both Shade matching and three dimensional reproduction of natural teeth. The HALO System has the advantage of using basic layering technique of opaque dentin, body & opal incisal to give an extraordinary aesthetic outcome and mimic natural tooth as much as possible.

Individual characterisation is limitless with the HALO which offers a wide range of options like effect color, value plus, opal and red shift powders to work with and build your artistic skills and expertise.

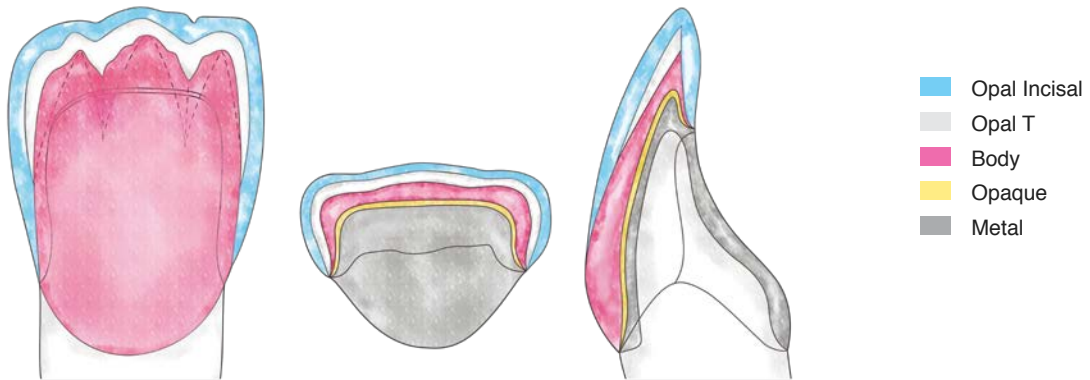
The HALO system has various other advantages such as significant Increase in physical strength and exhibits a slightly lower firing temperature of 900 °C and is compatible with a wide range of Alloys with a high tolerance for alloys containing upto 50% Silver.

### BENEFITS :

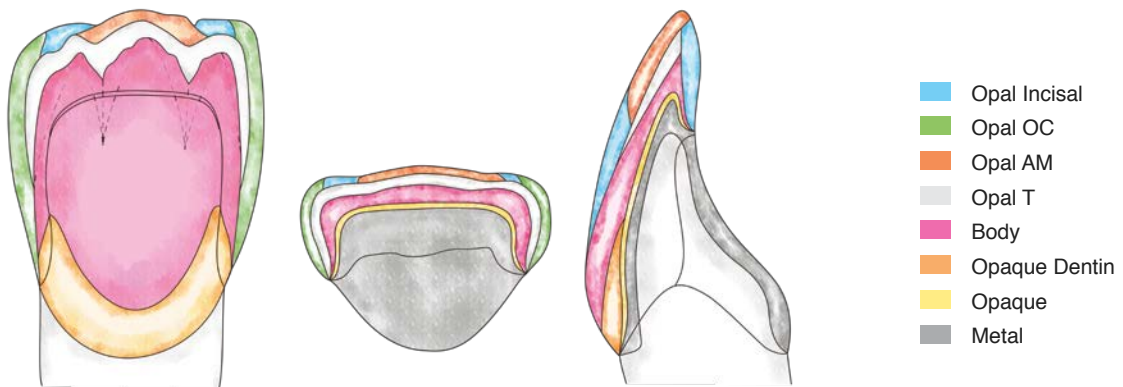
- Safe & simple application on all PFM alloys and compatible with a wide range of CTE's
- Enhanced bond strength to alloy with the application of base opaque
- Exceptional color stability
- Minimized wear of opposing tooth
- Paste Opaque assures outstanding masking properties even with a thin layer
- Homogenous and dense surface with low shrinkage during firing
- Excellent handling characteristics of porcelain powders
- An inherent anti-greening property to suit alloys with higher silver content
- Based on the vita classical shade guide

## LAYERING REPRESENTATION

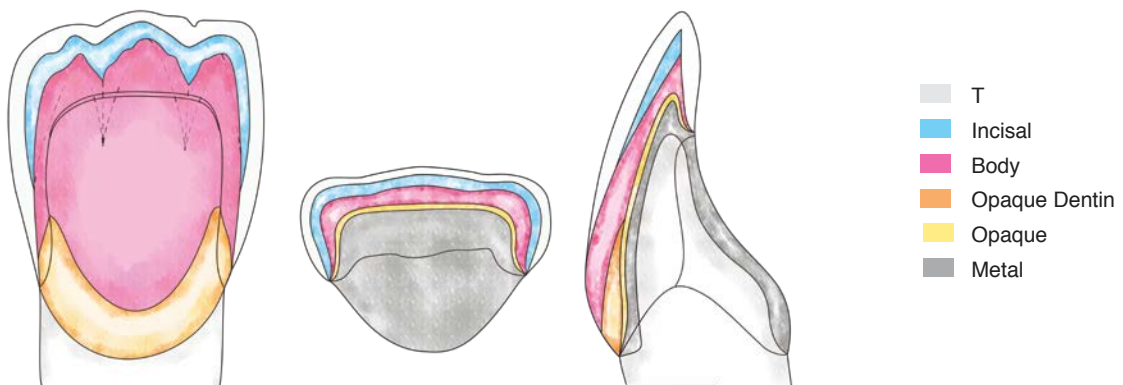
### Standardised Layering with Opal Porcelains



### Customised Layering with Opal Porcelains



### Standardised Layering with Incisal Porcelains without Opalescence



## FIRING INFORMATION

	Drying temp. °C	Drying min.	Preheating min.	Vacuum start °C	Inc. temp. °C/min.	Final temp. °C	Vacuum end °C	Hold* min.
Base Opaque Powder	500	5	1	500	60	960	960	1
Shade Opaque Powder	500	5	1	500	60	950	950	1
Base Opaque Paste	500	5	1	500	60	960	960	1
Shade Opaque Paste	500	5	1	500	60	950	950	1
1. Margin	650	5	1	650	50	940	940	0.5
2. Margin	650	5	1	650	50	930	930	0.5
1. Cervical, Body, Opaque Dentin, Opal Incisal, Opal Effect, Enamel Effect, Uni-Layer**, Color Effect	650	5	2	650	50	910	910	0.5
2. Cervical, Body, Opaque Dentin, Opal Incisal, Opal Effect, Enamel Effect, Uni-Layer**, Color Effect	650	5	2	650	50	900	900	0.5
VINTAGE Art Glaze	600	5	2	-	60	870	-	-
Gum	650	7	2	650	50	900	900	0.5
Gum-Glaze	650	5	2	-	60	900	-	0.5
Correction	650	5	1	650	60	870	870	0.5
Correction-Glaze	650	5	2	-	60	870	-	0.5

\* Hold with vacuum

**Note:** Please note that these data are only guidelines. If your firing results are not as good as they would be under optimal conditions in terms of surface quality, transparency or gloss, the parameters will have to be adjusted.

Firing conditions may vary, depending on the design and operating voltage of the porcelain furnace used. It is essential to carry out test firings, as described on page 5 of these instructions, before using the porcelains for actual restorations.

When applying large amounts of Paste Opaque or Powder Opaque, select a longer drying time at the furnace entrance and a longer preheating time, in order to thoroughly burn the liquid components.

When firing large restorations, it is also advisable to extend the drying time.

When applying porcelain layers > 1.5 mm in thickness to non-precious alloys or alloys with a CTE of  $> 14.5 \times 10^{-6} \text{K}^{-1}$ , longterm cooling after firing may be beneficial, beginning with the 1st body firing.



## PASTE SYSTEM

### VINTAGE MP BASE OPAQUE PASTE

Designed to be applied on the metal surface to enhance adhesion and masking ability of the Shade Opaque.

Ideal viscosity can be obtained by mixing with VINTAGE MP Opaque Liquid.

Upon sufficient mixing of the base opaque paste, a thin layer can be applied over the metal surface and uniform condensing could be achieved using a Ceramosonic S condenser.

#### Ordering Information :

VINTAGE MP Base Opaque Paste

SHADE	PN (5g)
Universal	9260



### VINTAGE MP SHADE OPAQUE PASTE

Designed to be applied on the fired base opaque and efficiently mask the underlying metal coping.

Ideal viscosity can be obtained by mixing with VINTAGE MP Opaque Liquid.

Available in 21 shades and provides an ideal opaque surface to commence with the powder layering.

#### Ordering Information :

VINTAGE MP Shade Opaque Paste

SHADE	PN (5g)
A1O	9261
A2O	9262
A3O	9263
A3.5O	9264
A4O	9265
ROOTAO	9266
B1O	9267
B2O	9268
B3O	9269
B4O	9270

SHADE	PN (5g)
C1O	9271
C2O	9272
C3O	9273
C4O	9274
D2O	9275
D3O	9276
D4O	9277
W0O	9278
W1O	9279
W2O	9280
W3O	9281



## POWDER SYSTEM

### VINTAGE HALO POWDER OPAQUE

The HALO Opaque powder has been refined and when mixed with the specially developed modelling liquid gives a smooth and paste like consistency during application.

A thin wash layer is applied initially and based on the need of further masking a second layer could be applied to achieve an optimum coverage of the metal.

#### Ordering Information :

VINTAGE Halo Powder Opaque

SHADE	PN (15g)	PN (50g)
W1O	7771	7776
W2O	7772	7777
W3O	7773	7778
A1O	7101	7121
A2O	7102	7122
A3O	7103	7123
A3.5O	7104	7124
A4O	7105	7125
ROOTAO	7106	7126
B1O	7107	7127
B2O	7108	7128
B3O	7109	7129
B4O	7110	7130
ROOTBO	7111	7131
C1O	7112	7132

SHADE	PN (15g)	PN (50g)
C2O	7113	7133
C3O	7114	7134
C4O	7115	7135
ROOTCO	7116	7136
D2O	7117	7137
D3O	7118	7138
D4O	7119	7139



## VINTAGE HALO OPAQUE DENTIN POWDER

The HALO Opaque dentin porcelain is designed to replicate areas of deep dentin and where the color of the opaque appears too dominant especially in the cervical and interdental areas or in areas where there is minimal space.

The powder exhibits reflection, brightness and color match identical to natural teeth thus plays a vital role in the overall aesthetic harmony more importantly in the above mentioned conditions.

### Ordering Information :

VINTAGE Halo Opaque Dentin Powder

SHADE	PN (15g)	PN (50g)
OD-A1	7711	7731
OD-A2	7712	7732
OD-A3	7713	7733
OD-A3.5	7714	7734
OD-A4	7715	7735
OD-ROOTA	7716	7736
OD-B1	7717	7737
OD-B2	7718	7738
OD-B3	7719	7739
OD-B4	7720	7740



SHADE	PN (15g)	PN (50g)
OD-ROOTB	7721	7741
OD-C1	7722	7742
OD-C2	7723	7743
OD-C3	7724	7744
OD-C4	7725	7745
OD-ROOTC	7726	7746
OD-D2	7727	7747
OD-D3	7728	7748
OD-D4	7729	7749

## VINTAGE HALO BODY

The HALO Body porcelain offers great handling and a wide shade range in order to best replicate the natural Dentin of the tooth.

SHOFU recommends that the HALO Body porcelain models the final anatomical form of the tooth through the "Cut Back Technique" wherein after layering the complete anatomy with the Body Porcelain it is slightly Condensed and is cut back labially and interproximally which further

determines the correct placement of opal Incisal porcelain ensuring natural Life like Aesthetics is achieved.

Care should be taken that the porcelain should not be allowed to completely dry out during the process.

### Ordering Information :

VINTAGE Halo Body

SHADE	PN (15g)	PN (50g)	PN (200g)
A1B	7201	7221	7241
A2B	7202	7222	7242
A3B	7203	7223	7243
A3.5B	7204	7224	7244
A4B	7205	7225	7245
ROOTAB	7206	7226	-
B1B	7207	7227	7247
B2B	7208	7228	7248
B3B	7209	7229	7249
B4B	7210	7230	7250
ROOTBB	7211	7231	-



SHADE	PN (15g)	PN (50g)	PN (200g)
C1B	7212	7232	-
C2B	7213	7233	-
C3B	7214	7234	-
C4B	7215	7235	-
ROOTCB	7216	7236	-
D2B	7217	7237	-
D3B	7218	7238	-
D4B	7219	7739	-
W1B	7781	7786	-
W2B	7782	7787	-
W3B	7783	7788	-

## VINTAGE HALO OPAL ENAMEL

The HALO Enamel porcelain powder has a structure and particle distribution to yield a very Natural Enamel like appearance. This property enables the Bluish translucency and diffused orange color of natural enamel to be reproduced without the addition of color effects.

Thus vital and aesthetic restorations can be produced using a simple two layer technique (Body & Enamel).

### Ordering Information :

VINTAGE Halo Opal Enamel

SHADE	PN (15g)	PN (50g)	PN (200g)
OPAL 56	7510	7541	-
OPAL 57	7511	7521	7531
OPAL 58	7512	7522	7532
OPAL 59	7513	7523	7533
OPAL 60	7514	7524	7534



## VINTAGE HALO INCISAL/STANDARD ENAMEL

The HALO Incisal / standard enamel is a non opal material with a greyish appearance which is often exhibited in old and worn out teeth. A layer of translucent powder is recommended to be used along with standard enamel to give a more natural appearance.

Standard Enamel porcelain is also recommended in restorations which have a complete metal backing to the Incisal Edge

### Ordering Information :

VINTAGE Halo Incisal/Standard Enamel

SHADE	PN (15g)	PN (50g)	PN (200g)
57	7331	7341	7351
58	7332	7342	7352
59	7333	7343	7353
60	7334	7344	7354



## VINTAGE HALO OPAL EFFECT

The HALO Opal Effect offers the expertise to create those natural like improvisations which offers precise detailing and an edge to reproduce life like restorations.

### Ordering Information :

VINTAGE Halo Opal Effect

SHADE	PN (15g)	PN (50g)	PN (200g)
OPAL T	7515	7525	7535
OPAL SL	7516	7526	-
OPAL AM	7517	7527	-
OPAL OC	7518	7528	-
OPAL WE	7519	7529	-
OPAL MI	7520	7530	-



### Available in 6 shades :

- **Opal T (Translucent)** - Slightly translucent material often used in incisal area between body & opal enamel to create depth of shade
- **Opal SL (Super Translucent)** - Most opalescent material with a bluish translucency, duller than opal T used to create an increased three dimensional appearance between body and opal incisal porcelain.
- **Opal AM (Amber)** - Produces a translucent orange effect which is often seen in middle age teeth.
- **Opal OC (Occlusal)** - Used to emphasize milky dull areas of occlusal surfaces and can also be used to brighten the interproximal areas of anterior teeth.
- **Opal WE (White E)** - Has a duller and whiter appearance than opal occlusal and is used to create cusp tips on molars or demineralised areas in anterior teeth.
- **Opal MI (Milky)** - Has a creamy white opal appearance and is used in small amounts to emphasize Cusp tips, proximal areas and decalcified areas.

## VINTAGE HALO ENAMEL EFFECT

The HALO Enamel Effect porcelain provides various levels of Translucency in order to reproduce the smallest of detailing and individual characterisations of enamel color which enhances the overall aesthetic harmony of the restoration.

### Ordering Information :

VINTAGE Halo Enamel Effect

SHADE	PN (15g)	PN (50g)	PN (200g)
T	7335	7345	7355
T GLASS	7336	7346	7356
BT	7369	7589	-
YT	7370	7390	-



## VINTAGE HALO COLOR EFFECT

The Halo Color Effect offers precise color detailing of the Incisal areas considering the fact that natural enamel exhibits various wavelengths of colors perceived by human eyes.

### Ordering Information :

VINTAGE Halo Color Effect

SHADE	PN (15g)	PN (50g)
W	7361	7381
O	7362	7382
BR	7363	7383
Red D	7364	7384
Red L	7365	7385
MP	7366	7386
MY	7367	7387
BG	7368	7388



## VINTAGE HALO MARGIN

The HALO Margin porcelain is used when an All Ceramic Shoulder is required, where the metal is removed on the labial aspect of the cervical area to achieve an adequate space for the porcelain shoulder of 0.5 - 0.7 mm

Thus margin porcelains offer greater strength and toughness against the stresses occurring at the shoulder margins and efficiently prevents black effect which commonly occurs due to metal exposure at the margins.

Offers Ideal placement when best mixed with the margin hardening liquid which when dried toughens the porcelain making it easy to remove the frame from the abutment.

### Ordering Information :

VINTAGE Halo Margin

SHADE	PN (15g)
A1M	7651
A2M	7652
A3M	7653
A3.5M	7654
A4M	7655
ROOTAM	7656
B1M	7657
B2M	7658
B3M	7659
B4M	7660
ROOTBM	7661

SHADE	PN (15g)
C1M	7662
C2M	7663
C3M	7664
C4M	7665
ROOTCM	7666
D2M	7667
D3M	7668
D4M	7669



## VINTAGE HALO ADD-ON

The HALO Add-On porcelain allows you to efficiently do final corrections or Add On's to Mask any Deficiency / Defects after contouring or self-glazing.

### Ordering Information :

VINTAGE Halo Add-On

SHADE	PN (15g)
B	7021
T	7020
CPM	7670
CPM Fine	7671



Available in 4 Types :

- **Add-On B** : Body
- **Add-On T** : Translucency
- **Add-On CPM** : Cervical Porcelain Margin
- **Add-On CPM Fine** : Cervical Porcelain Margin Fine



## LIQUID SYSTEM

### VINTAGE MIXING LIQUID HC

The VINTAGE Mixing Liquid HC provides an Ideal consistency and improves the overall handling Properties of all Porcelain Powders.

Can be used singularly or mixed with distilled water to achieve the desired consistency.

#### Ordering Information :

VINTAGE Mixing Liquid HC

QTY	PN (15g)
50 ml	9613
500 ml	9614



### VINTAGE HALO OPAQUE LIQUID

The VINTAGE Halo Opaque Liquid is a water based medium which improves the overall workability when mixed along with the Halo opaque powder while masking the inner metal coping.

#### Ordering Information :

VINTAGE Halo Opaque Liquid

QTY	PN
50 ml	7010
500 ml	7011



### VINTAGE HALO PAINT OPAQUE LIQUID

The VINTAGE Halo Paint Opaque Liquid is an oil based medium which creates an Ideal Paste like viscosity when mixed with Halo Opaque Powder thus enhancing the handling properties of the porcelain Powder.

#### Ordering Information :

VINTAGE Halo Paint Opaque Liquid

QTY	PN
50 ml	7017
350 ml	7018



## VINTAGE MP OPAQUE LIQUID

The VINTAGE Opaque Liquid is Ideally mixed with the Vintage MP Base Paste and Shade Opaque Paste to Improve the handling of the paste system, easy & uniform condensation of the paste over the coping and Increase the working time thus efficiently masking the underlying metal coping.

### Ordering Information :

VINTAGE MP Opaque Liquid

QTY	PN
3 ml	9610
20 ml	9617



## VINTAGE MARGIN HARDENING LIQUID

The VINTAGE Margin Hardening Liquid is a mixing liquid for margin porcelains.

When dried with a dryer, this liquid hardens the margin porcelains making it easy to remove the frame from the abutment tooth.

### Ordering Information :

VINTAGE Margin Hardening Liquid

QTY	PN
50 ml	9615



## VINTAGE CPM MODELLING LIQUID

The VINTAGE CPM Modelling Liquid is a mixing liquid for marginal porcelain and correction porcelain.

### Ordering Information :

VINTAGE CPM Modelling Liquid

QTY	PN
3 ml	7642





### **3.ZIRCONIA LAYERING CERAMICS**

#### **VINTAGE ZR**





## STATE OF THE ART CERAMIC TECHNOLOGY FOR ALL ZIRCONIA FRAMEWORKS

### BASIC INFORMATION

VINTAGE ZR Porcelain system has been specially designed for extra strong zirconium oxide frameworks following extensive research & development in the ceramic field.

Its microfine and homogenous particle structure enables efficiency in handling and an excellent color harmonisation to natural teeth even with the application of extremely thin layers.

Ensures high bonding strength with increased resistance against cracking and the physical properties remain unchanged even after repeated firing with a stable coefficient of thermal expansion.

The opaque liner effectively masks the underlying discoloured abutments or metal posts while minimizing the inherent reflectivity of the zirconia core.

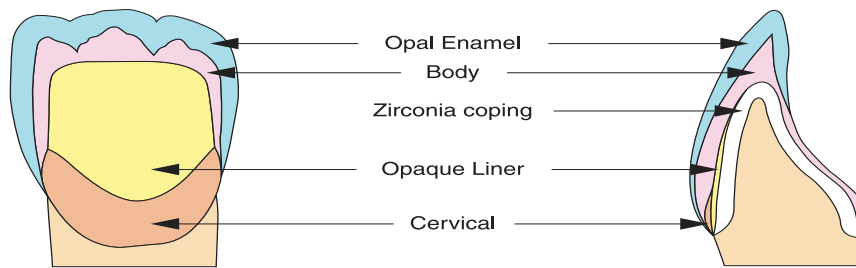
Life Like restorations can be easily attained with the extensive range of opal enamel and opal effect shades through a simplified 2 layer build up technique.

#### **BENEFITS :**

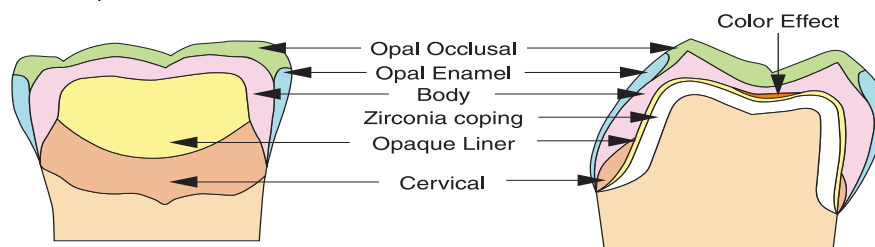
- Recommended for all Zirconia framework materials
- Simple and reliable application
- Feldspar based micro-ceramic with extraordinary strength
- Stable CTE even after several firings
- Predictable aesthetics with a simple two layer technique
- Remarkable handling characteristics
- Logically co-ordinated color concept
- Corresponds to VITA classical shade guides
- Exhibits Natural fluorescence & True opalescence

## LAYERING REPRESENTATION

► For anterior teeth

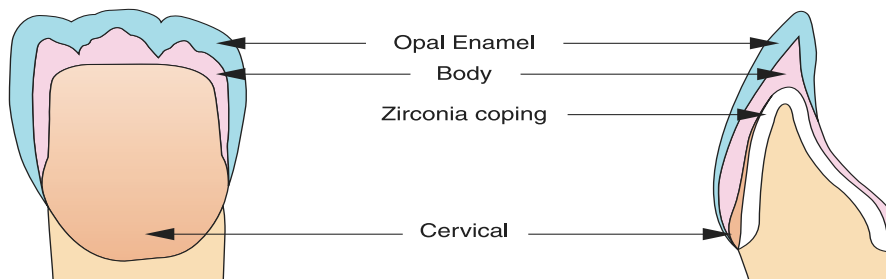


► For posterior teeth

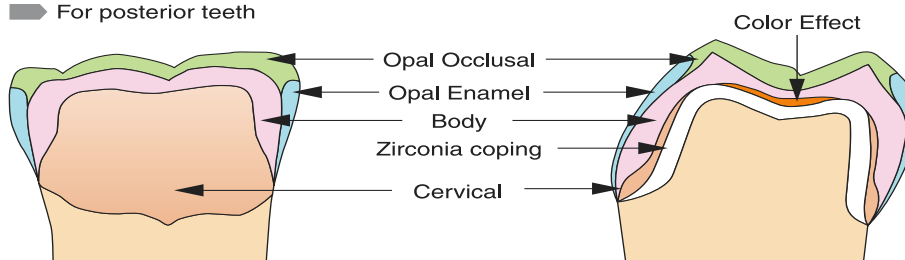


Layering structure using Opaque liner

► For anterior teeth



► For posterior teeth



Layering structure without Opaque Liner

### Hint

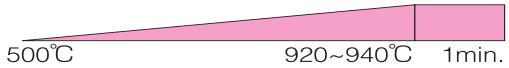

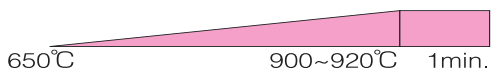
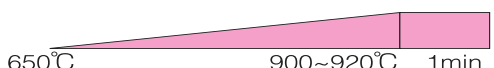
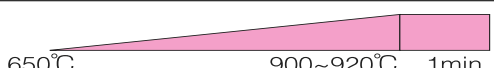
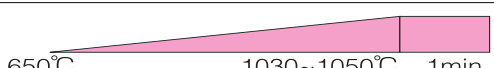
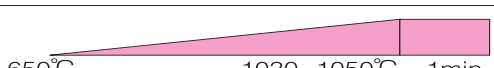
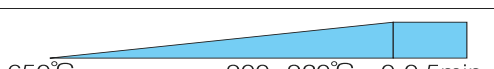
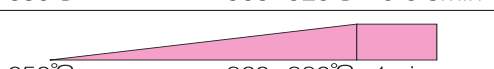
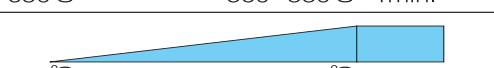

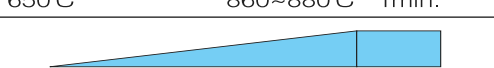
Foundation work

It is a procedure to adjust shade of the coping .

In this work, Opaque Liner is used for the shade foundation and staining is recommended for the individual adjustment of the shade.

## FIRING INFORMATION

Table 6 - Firing schedule table

Type of porcelain	Drying time (min.)	Temperature raising speed (°C /min.)	
1 <sup>st</sup> Opaque Liner	7~8	45	
2 <sup>nd</sup> Opaque Liner	7~8	45	
Cervical	5~6	45	
1 <sup>st</sup> Body, Enamel	5~6	45	
2 <sup>nd</sup> Body, Enamel	5~6	45	
1 <sup>st</sup> Margin	5~6	45	
2 <sup>nd</sup> Margin	5~6	45	
Self Glaze	5~6	45	
1 <sup>st</sup> Gum	5~6	45	
Gum glaze	5~6	45	
1 <sup>st</sup> Correction	5~6	45	
Correction Glaze	5~6	45	

 Vacuum firing  
 Firing in the air

### PLEASE NOTE :

Firing conditions vary due to the different designs and operating voltages of porcelain furnaces. It is essential to carry out test firings before using the porcelain for actual restorations.

#### Hint

##### ● Heat rate

As the heat conductivity of a zirconia coping is low compared with that of a metal coping, it is advisable to set the furnace to a low heat rate.

## PASTE SYSTEM

### VINTAGE ZR OPAQUE LINER PASTE

Designed to be applied over the coping to create the base shade and the paste form allows easy application in thin layers.

It is particularly useful in case of discolored abutment where the opaque liner masks the entire coping preventing light transmission thus offers shade stability and aesthetics remains unaltered.

#### Ordering Information :

VINTAGE ZR Opaque Liner Paste

SHADE	PN (5g)
A1O	9011
A2O	9012
A3O	9013
A3.5O	9014
A4O	9015
ROOTAO	9016
B1O	9017
B2O	9018
B3O	9019
B4O	9020

SHADE	PN (5g)
C1O	9021
C2O	9022
C3O	9023
C4O	9024
D2O	9026
D3O	9027
D4O	9028
W0O	9029
W1O	9030
W2O	9031
W3O	9032



## POWDER SYSTEM

### VINTAGE ZR OPAQUE DENTIN POWDER

The ZR opaque dentin porcelain is designed to replicate areas of deep dentin and where the color of the opaque appears too dominant especially in the lingual areas and in gingival areas of bridge pontics where there is minimal space.

#### Ordering Information :

VINTAGE ZR Opaque Dentin Powder

SHADE	PN (15g)	PN (50g)
OD-WO	9040	9059
OD-W1	9041	9060
OD-A3	9043	9062
OD-ROOTA	9045	9064
OD-B2	9047	9066
OD-B4	9049	9068
OD-C2	9051	9070
OD-C4	9053	9072

SHADE	PN (15g)	PN (50g)
OD-D3	9055	9074
OD-N	9039	9058



### VINTAGE ZR BODY

The ZR Body porcelain offers great handling and a wide shade range in order to best replicate the natural dentin of the tooth.

Shofu recommends that the ZR Body porcelain models the final anatomical form of the tooth through the "Cut Back Technique" wherein after layering the complete anatomy with the Body porcelain it is condensed and is cut back labially and inter proximally which further determines the correct placement of opal enamel porcelain ensuring natural life like aesthetics is achieved

#### Ordering Information :

VINTAGE ZR Body

SHADE	PN (15g)	PN (50g)
A1B	9077	9102
A2B	9078	9103
A3B	9079	9104
A3.5B	9080	9105
A4B	9081	9106
ROOTAB	9082	9107
B1B	9083	9108
B2B	9084	9109
B3B	9085	9110
B4B	9086	9111

SHADE	PN (15g)	PN (50g)
C1B	9088	9113
C2B	9089	9114
C3B	9090	9115
C4B	9091	9116
D2B	9093	9118
D3B	9094	9119
D4B	9095	9120
W0B	-	9121
W1B	9097	9122
W2B	9098	9123
W3B	9099	9124





## VINTAGE ZR OPAL ENAMEL

The ZR Opal Enamel porcelain powder has a structure and particle distribution to yield a very natural enamel like appearance. This property enables the bluish translucency and diffused orange color of natural enamel to be reproduced without the addition of color effects.

Thus vital and aesthetic restorations can be produced using a simple two layer technique (Body & Enamel).

### Ordering Information :

VINTAGE ZR Opal Enamel

SHADE	PN (15g)	PN (50g)
OPAL 55	9126	9142
OPAL 56	9127	9143
OPAL 57	9128	9144
OPAL 58	9129	9145
OPAL 59	9130	9146
OPAL 60	9131	9147



## VINTAGE ZR OPAL EFFECT

The ZR Opal Effect porcelain transmits light similar to natural enamel thus produces opalescence effect enhancing the overall aesthetics.

### Ordering Information :

VINTAGE ZR Opal Effect

SHADE	PN (15g)	PN (50g)
OPAL T	9133	9149
OPAL SL	9134	9150
OPAL WE	9135	9151
OPAL MI	9136	9152
OPAL AM-R	9138	9154
OPAL AM-Y	9139	9155
OPAL AM-V	9140	9156
OPAL OC	9137	9153



Available in 8 shades :

- **Opal T** - **Translucent**, regular opalescent translucent porcelain
- **Opal SL** - **Super Lucent**, a slightly bluish porcelain with higher opalescent translucency
- **Opal WE** - **White Enamel**, a slightly whitish porcelain for use in marginal or interproximal areas
- **Opal MI** - **Milky**, milky shade porcelain for use in molar cusps or whitish areas
- **Opal AM-R** - **Amber Red**, a slightly Reddish amber porcelain for reproducing enamel shades
- **Opal AM-Y** - **Amber Yellow**, a slightly yellowish amber porcelain for reproducing enamel shades
- **Opal AM-V** - **Amber Violet**, a slightly violet amber porcelain for reproducing enamel shades
- **Opal OC** - **Occlusal**, a slightly dull yellowish porcelain for use in occlusal areas in molars

## VINTAGE ZR ENAMEL EFFECT

The ZR Enamel effect porcelain provides various levels of translucency without opalescence to reproduce detailing and individual characterisations of enamel which enhances the overall aesthetic harmony of the restoration.

### Ordering Information :

VINTAGE ZR Enamel Effect

SHADE	PN (15g)	PN (50g)
BT	9159	9166
OT	9160	9167
PT	9161	9168
GT	9162	9169
T-GLASS	9163	9170



### Available in 5 varieties of Translucencies :

- **BT** - Bluish Translucent Porcelain
- **OT** - Orangish Translucent Porcelain
- **PT** - Pinkish Translucent Porcelain
- **GT** - Greyish Translucent Porcelain
- **T - Glass** - Highly Translucent (Glass like) Porcelain

## VINTAGE ZR GUM

The ZR Gum porcelain is pink shaded for reproducing gum shades and is fired at lower temperatures thus it can be used after firing the regular porcelain.

### Ordering Information :

VINTAGE ZR Gum

SHADE	PN (15g)
DP	9210
LP	9209
OR	9212
P	9208
R	9207
V	9211



### Available in 6 shades :

- Gum DP - Dark Pink
- Gum LP - Lite Pink
- Gum OR - Orange
- Gum P - Pink
- Gum R - Red
- Gum V - Violet

## VINTAGE ZR CERVICAL TRANSLUCENT

The ZR Cervical Translucent porcelain has a slightly Lower firing temperature than body Porcelain. It reproduces deeper translucent shades in cervical areas and creates smooth surfaces for tissue compatibility.

It exhibits high fluorescence.

### Ordering Information :

VINTAGE ZR Cervical Translucent

SHADE	PN (15g)	PN (50g)
CT-CL	9185	9192
CT-W	9186	9193
CT-A	9187	9194
CT-B	9188	9195
CT-R	9189	9196



### Available in 5 Translucencies :

- **CT-CL** : Translucent Porcelain
- **CT-W** : A slightly Translucent porcelain, used for turning cervical areas whitish
- **CT-A** : Orangish Translucent porcelain for use with A shade groups mixed with CT-CL
- **CT-B** : Yellowish Translucent porcelain for use with B shade groups mixed with CT-CL
- **CT-R** : Reddish Translucent porcelain for use with R shade groups mixed with CT-CL

## VINTAGE ZR COLOR EFFECT

The ZR Color Effect offers Precise color detailing of the Incisal areas considering the fact that natural enamel exhibits various wavelengths of colors perceived by human eyes.

### Ordering Information :

VINTAGE ZR Color Effect

SHADE	PN (15g)
MP	9199
MI	9201
MY	9200
R	9202
Y	9203
O	9204
G	9205
W	9206



### Available in 8 shades :

- **ZR-MP** - Mamelon Pink ,for reproducing mamelons in incisal areas of younger patients
- **ZR-MI** - Mamelon Ivory, for reproducing mamelons in incisal areas of middle aged patients
- **ZR-MY** - Mamelon Yellow, for reproducing mamelons in incisal areas of elderly patients
- **ZR-R** - Reddish porcelain
- **ZR-Y** - Yellowish Porcelain
- **ZR-O** - Orangish Porcelain
- **ZR-G** - Greyish Porcelain
- **ZR-W** - Whitish Porcelain

## VINTAGE ZR MARGIN

The ZR Margin porcelain has the same shade as body porcelain, but has a higher firing Temperature and increased fluorescence.

It is used for optimizing the marginal areas of zirconia copings or building up porcelain margins.

### Ordering Information :

VINTAGE ZR Margin

SHADE	PN (15g)
W0M	9217
W1M	9218
A3M	9220
ROOTAM	9222
B2M	9224
B4M	9226
C2M	9229
C4M	9231
D3M	9233



## VINTAGE ZR MARGIN EFFECT

The ZR Margin Effect porcelain is used along with the basic marginal porcelain in order to obtain fine detailing in the margins

### Ordering Information :

VINTAGE ZR Margin Effect

SHADE	PN (15g)
CLM	9236
LPM	9238
NM	9237



### Available as 3 Shades :

- **ZR-CLM** : Transparent shade, also used for mixing with basic margin porcelain for adjusting transparency (maximum mixing ratio-40%)
- **ZR-LPM** : Light Pinkish shade for mixing with basic margin porcelain
- **ZR-NM** : Diluent color porcelain for mixing with basic margin porcelain shades

## VINTAGE ZR ADD-ON

The ZR Add-On porcelain allows you to efficiently do final corrections or Add On's to mask any deficiency / defects after contouring or self-glazing.

### Ordering Information :

VINTAGE ZR Add-On

SHADE	PN (15g)
B	9213
T	9214
CPM Fine	9215



### Available in 3 Types :

- **Add-On B** : Body
- **Add-On T** : Translucency
- **Add-On CPM Fine** : Cervical Porcelain Margin Fine

## LIQUID SYSTEM

### VINTAGE MIXING LIQUID HC

The VINTAGE Mixing Liquid HC provides an ideal consistency and improves the overall handling properties of all porcelain powders.

Can be used singularly or mixed with distilled water or Vintage Mixing Liquid.

#### Ordering Information :

VINTAGE Mixing Liquid HC

QTY	PN
50 ml	9613
500 ml	9614



### VINTAGE AL/ZR OPAQUE LINER LIQUID

The AL/ZR opaque liner liquid is used to adjust the viscosity of the ZR Opaque Liner paste aiding uniform application over the coping in thin layers.

#### Ordering Information :

VINTAGE AL/ZR Opaque Liner Liquid

QTY	PN
3 ml	8011



# VINTAGE CPM MODELLING LIQUID

The VINTAGE CPM Modelling Liquid is a mixing liquid for marginal porcelain and correction porcelain.

**Ordering Information :**  
 VINTAGE CPM Modelling Liquid

QTY	PN
3 ml	7642



The VINTAGE ZR AB Set consists of 34 bottles to effectively mimic A & B shades.

## SET PACKAGING

### VINTAGE ZR AB SET

**Ordering Information :**  
 VINTAGE ZR AB Set

PACKAGING	PN
Set	9000



#### Packaging :

- Opaque Liners 5g x 10 (A1O, A2O, A3O, A3.5O, A4O, Root AO, B1O,B2O, B3O, B4O)
- Cervical 15g x 2 (AC, BC)
- Body 15g x 10 (A1B, A2B, A3B, A3.5B, A4B, RootAB, B1B, B2B, B3B, B4B)
- Opaque Dentin 15g x 5 (OD-N, OD-A3, OD-RootA, OD-B2, OD-B4)
- Opal Enamel 15g x 4 (Opal 57, Opal 58, Opal 59, Opal 60)
- Opal Effect 15g x 1 (Opal T)
- Add On/Correction Powder 15g x 2 (Add-On B, Add-On T)
- Vintage AL/ZR Opaque Liner liquid 3ml x 1
- Vintage Modelling Liquid 50ml x 1

## VINTAGE ZR CD SET

The VINTAGE ZR CD set consists of 19 bottles to attain the vita classical C & D shades.

### Ordering Information :

VINTAGE ZR CD Set

PACKAGING	PN
Set	9001



### Packaging :

Opaque Liners 5g x 7 (C1O, C2O, C3O, C4O, D2O, D3O, D4O)

Cervical 15g x 2 (CC, DC)

Body 15g x 7 (C1B, C2B, C3B, C4B, D2B, D3B, D4B)

Opaque Dentin 15g x 3 (OD-C2, OD-C4, OD-D3)

Vintage AL/ZR Opaque Liner liquid 3ml x 1

## VINTAGE ZR WHITENING SET

The VINTAGE ZR Whitening Set consists of 11 Bottles to effectively create restorations that perfectly match bleached teeth.

### Ordering Information :

VINTAGE ZR Whitening Set:

PACKAGING	PN
Set	9002



### Packaging :

Opaque Liner 5ml x 3 (W1O, W2O, W3O)

Body 15g x 3 (W1B, W2B, W3B)

Opaque Dentin 15g x 2 (OD-N, OD-W1)

Opaque Enamel 15g x 2 (Opal 56, Opal 57)

Opal Effect 15g x 1 (Opal T)

Vintage AL/ZR Opaque Liner Liquid 3ml



## VINTAGE ZR ENAMEL EFFECT SET

The VINTAGE ZR enamel effect set consists of 18 bottles in opal effect, enamel effect and cervical trans shades to attain individual effects and characterizations in the enamel layer.

The opal effect shades exhibit natural opalescent effect, the enamel effect shades have added translucence and cervical trans provides highly fluorescent and translucent cervical shades.

### Ordering Information :

VINTAGE ZR Enamel Effect Set

PACKAGING	PN
Set	9003



### Packaging :

Opal Effect 15g x 8 (Opal T, Opal SL, Opal WE, Opal MI, Opal OC, Opal AM-R, Opal AM-Y, Opal AM-V)

Enamel Effect 15g x 5 (BT, OT, PT, GT, T-Glass)

Cervical Trans 15g x 5 (CT-CL, CT-W, CT-A, CT-B, CT-R)

## VINTAGE ZR COLOR EFFECT SET

The VINTAGE ZR Color Effect Set consists of 13 natural effect shades to characterize the Opaque layer, Body and Cervical porcelain for individual aesthetics.

### Ordering Information :

VINTAGE ZR Color Effect Set

PACKAGING	PN
Set	9005



### Packaging :

Opaque Liner Effect 5g x 3 (OM-Y, OM-LP, OM-DP)

Color Effect 15g x 8 (MP-MY, MIV, R, Y, O, G, W)

Gum 15g x 2 (Gum-LP, Gum-DP)

## VINTAGE ZR MARGIN PORCELAIN SET

The VINTAGE ZR Margin Porcelain Set consists of 13 shades to achieve highly aesthetic and smooth marginal areas ,in the same shades as Body porcelain.

Margin porcelain should be fired at higher firing temperature and it exhibits increased fluorescence.

### Ordering Information :

VINTAGE ZR Margin Porcelain Set

PACKAGING	PN
Set	9004



### Packaging :

Margin 15g x 9 ( CLM, NM, A2M, RootAM, B2M, B4M, C2M, C4M, D3M, WIM)

Margin Effect 15g x 1 (LPM)

Add-On/Correction 15g x 2 (Add-On B, CPM Fine)

VINTAGE CPM Modelling Liquid 3ml x 1

VINTAGE Margin Porcelain Isolation liquid 7ml x 1



## **4.VINTAGE HALO, VINTAGE PRO & VINTAGE ZR STAINING & GLAZING SYSTEM**

### **VINTAGE ART**





## VINTAGE ART STAIN

### HIGH FUSION STAINING OF PFM & ZIRCONIA CERAMICS

The VINTAGE ART fluorescent porcelain stains are designed to realize the internal and external modification of shades for all existing high fusing PFM porcelain systems, zirconia/alumina ceramic frames, CAD/CAM porcelain blocks, press ceramics and artificial porcelain teeth.

With an availability of over 32 stains, the VINTAGE ART system provides the necessary inventory and expertise to achieve phenomenal aesthetics and reproducing natural life like appearance taking your artistic skills to a whole new dimension.

The color concept of the VINTAGE ART system is logically structured in three main color groups which are highly fluorescent and matches the fluorescence of natural dentition thus enhancing the vitality of ceramic frameworks.

The natural appearance of the shade is even maintained under artificial light conditions.

#### VINTAGE ART STAINS :

- Base color stains
- Color stains
- Shade stains

## STAINING SYSTEM

### VINTAGE ART BASE COLOR STAINS

#### BASE COLOR STAINS :

The aesthetic color concept includes primary colors, secondary colors and achromatic colors.

#### Ordering Information :

VINTAGE ART Base Color Stains

SHADE	PN (3g)
P	6515
Y	6516
BL	6517
O	6518
V	6519
G	6520
B	6521
W	6522
G	6523



- **P - Pink** : Primary Color for shade adjustments, cervical and gum areas
- **Y - Yellow** : Primary Color for shade adjustments
- **BL - Blue** : Primary Color for shade adjustments and incisal areas
- **O - Orange** : Secondary Color for shade adjustments, cervical areas and staining
- **V - Violet** : Secondary Color for shade adjustments, incisal and gum areas
- **G - Green** : Secondary Color for shade adjustments
- **B - Black** : Achromatic Color for shade adjustments and staining
- **W - White** : Achromatic Color for incisal areas and staining
- **G - Gray** : Achromatic Color for shade adjustments and incisal areas

## VINTAGE ART COLOR STAINS

Based on these shades all individual colors and color adjustments can be achieved for the reproduction of every individual tooth characteristics.

### Ordering Information :

VINTAGE ART Color Stains

SHADE	PN (3g)
Dr-Br	6523
O-Br	6524
K	6525
BL-G	6532
CY	6533
Br	6534
B-Br	6535
MP	6536
Mlv	6537
RP	6538
WR	6539
P-O	6540



- **DR-Br - Dark Red Brow** : For cervical areas and staining
- **O-Br - Orange Brown** : For cervical & Incisal areas and staining
- **K - Khaki** : For cervical areas and staining
- **BL-G - Blue Gray** : For incisal areas
- **CY - Corn Yellow** : For incisal areas
- **Br - Brown** : For cervical areas and staining
- **B-Br - Black Brown** : For cervical areas and staining
- **MP - Mamelon Pink** : For incisal areas
- **Mlv - Mamelon Ivory** : For incisal areas
- **RP - Rose Pink** : For cervical and gum areas
- **WR - Wine Red** : For cervical and gum areas
- **P-O - Pink Orange** : For cervical and gum areas

## VINTAGE ART SHADE STAINS

### BASE SHADE STAINS :

Used to obtain coloration in the desired shade group of finished milled or pressed ceramic crowns and bridges just by their surface application.

The shade stains are recommended for shade adjustments of finished ceramic restorations. They are applied on the porcelain surface to adjust the chroma and hue of the shade and can also be used on the opaque surface of metal porcelain for adjustment of base color.

The foundation stains which are designed with a lower value than the shade stains, offers unique possibilities for obtaining three-dimensionality with metal free and metal bonded porcelain works by direct application of a thin layer on the opaque or on the alumina/zirconia frameworks to establish the basic shade

### Ordering Information :

VINTAGE ART Shade Stains

SHADE	PN (3g)
AS	6526
BS	6527
CS	6528
DS	6529
RS	6530
F-AS	6541
F-BS	6542
F-CS	6543
F-DS	6544
F-RS	6545



- **AS - A Shade** : Shade stains for shade adjustments and cervical areas
- **BS - B Shade** : Shade stains for shade adjustments and cervical areas
- **CS - C Shade** : Shade stains for shade adjustments and cervical areas
- **DS - D Shade** : Shade stains for shade adjustments and cervical areas
- **RS - R Shade** : Shade stains for shade adjustments and cervical areas
- **F-AS - Foundation A** : Foundation shade stain for shade adjustments
- **F-BS - Foundation B** : Foundation shade stain for shade adjustments
- **F-CS - Foundation C** : Foundation shade stain for shade adjustments
- **F-DS - Foundation D** : Foundation shade stain for shade adjustments
- **F-RS - Foundation R** : Foundation shade stain for shade adjustments

## VINTAGE ART STAIN LIQUID

The VINTAGE ART Stain Liquid serves to be an ideal mixing liquid to be used with the ART stains to improve the handling and ease of placement of stains precisely.

### Ordering Information :

VINTAGE ART Stain Liquid

PACKAGING	PN
50 ml	6513



## GLAZING SYSTEM

### VINTAGE ART GLAZE PASTE

The VINTAGE ART Glaze Paste is an easy to apply system in order to give the final polish and lustre to the restoration thus making them more life-like and provides the technician the extra edge to enhance aesthetics.

### Ordering Information :

VINTAGE ART Glaze Paste

PACKAGING	PN
50 ml	6514







## **5.LITHIUM DI SILICATE GLASS CERAMICS VINTAGE LD**





## LITHIUM DISILICATE BASED GLASS CERAMIC COMPRISING OF INGOT AND LAYERING PORCELAIN SYSTEM

### BASIC INFORMATION

Designed to meet the highest level of aesthetic expectation, VINTAGE LD is an innovative, predictable lithium disilicate based all-ceramic system that offers life-like aesthetics with various levels of natural translucency and lasting durability.

VINTAGE LD offers a versatile solution for a variety of clinical indications to meet the aesthetic requisite of all-ceramic anterior and posterior restorations.

A combination of 3 perfectly compatible components that can be applied individually or in unison :

- VINTAGE LD Press ( Pressable Ingot system)
- VINTAGE LD Layering Ceramics
- VINTAGE Art LF (Low Fuse Stains)

#### Benefits :

- Outstanding aesthetics for life like, bespoke restorations
- Predictable & flexible system that offers cost-effective, time saving and customized solutions.
- Simple and consistent fabrication processing
- Comprehensive shade line Up to meet patient's specific requirements
- Easy to apply, versatile, low fusing stains facilitate individualized aesthetics
- Remarkable mechanical properties with outstanding durability
- Exceptional Shade stability and impeccable color match
- Optimal precision for consistent results and fit

#### Indications :

- Inlays
- Onlays and Overlays
- Laminate Veneers
- Anterior and Posterior full crowns
- 3-Unit bridge in anterior and premolar region
- Implant supported restorations

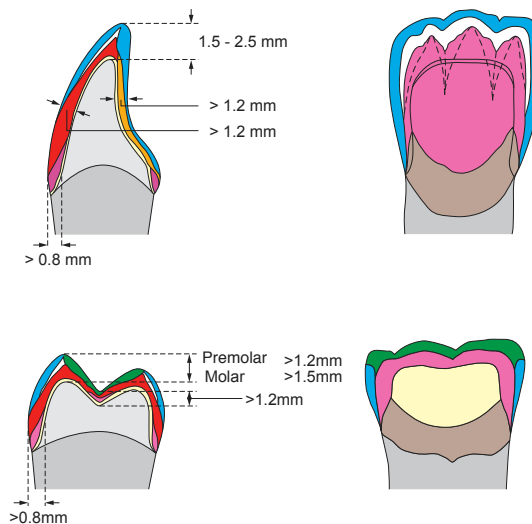
## LAYERING TECHNIQUE REPRESENTATIONS

This technique is optimal for the case, where high aesthetics is required such as anterior restorations.

The frame design is created with VINTAGE LD PRESS taking into account a maximum 2 mm layer thickness of the subsequent VINTAGE LD porcelain masses. Prepare the framework as described in process “7. Finishing” for the VINTAGE LD PRESS / Staining Technique.

Translucency		Technique	Indication					
		Layering	Veneer	Inlay	Partial crown	Anterior crown	Molar crown	Bridge
High	T		o	o	o	o	o	
Medium	MT	o	o		o	o	o	o
Low Opacity	LO	o				o	o	o
Medium Opacity	MO	o				o	o	o

### Layering Diagram



## FIRING INFORMATION

LD Porcelain	Drying Temp. (°C)	Drying (min.)	Pre-heating (min.)	Vacuum Start (°C)	nc. Temp. (°C / min.)	Final Temp. (°C)	Vacuum End (°C)	Hold (min.)
Wash	400	3-4	1	400	45	780	780	1.0
1. Body, Effect, Enamel	400	4-5	1-2	400	45	760-770	760-770	1.0
2. Body, Effect, Enamel	400	3-5	1-2	400	45	760-770	760-770	0.5
Glaze	450	3-5	1-2	-----	55	750-760	-----	1.0
Correction	400	3-5	1-2	400	55	720	720	0.5
Correction - Glaze	400	3-5	1-2	400	55	730	730	1.0

**Note:** Optimal firing conditions vary due to the different designs and operating voltages of the porcelain furnaces. It is essential to carry out test firings before firing actual restorations.

## PRESS INGOT SYSTEM

VINTAGE LD PRESS - Lithium di silicate pressable ceramic ingots are composed of an interlocking network of acicular crystals embedded homogenously in the glass matrix that imparts remarkable mechanical strength and exceptional crack resistance.

Available in 4 levels of translucency for an extensive clinical application.

- Medium Opacity Ingots
- Low Opacity Ingots
- Medium Translucent Ingots
- Translucent Ingots

### MEDIUM OPACITY INGOTS

Indicated for fabrications of framework on severely discoloured preparations.

Available in 3 Shades

#### Ordering Information :

VINTAGE LD Medium Opacity Ingots 3g x 5

SHADE	PN (3g)
MO1	8538
MO2	8539
MO3	8540



### LOW OPACITY INGOTS

Indicated for Customized Abutments or slightly discolored tooth preparation.

Available in 5 Shades

#### Ordering Information :

VINTAGE LD Low Opacity Ingots 3g x 5

SHADE	PN (3g)
LO1	8533
LO2	8534
LO3	8535
LO4	8536
LO5	8537



## MEDIUM TRANSLUCENT INGOTS

Indicated for majority of clinical applications.  
Available in 19 Shades which includes Vita Classical shades and Whitening shades.

### Ordering Information :

VINTAGE LD Medium Translucent Ingots 3g x 5

SHADE	PN
MT-A1	8510
MT-A2	8511
MT-A3	8512
MT-A3.5	8513
MT-A4	8514
MT-B1	8515
MT-B2	8516
MT-B3	8517
MT-B4	8518

SHADE	PN
MT-C1	8519
MT-C2	8520
MT-C3	8522
MT-C4	8523
MT-D2	8524
MT-D3	8525
MT-D4	8526
MT-W1	8527
MT-W2	8528
MT-W3	8529



## TRANSLUCENT INGOTS

Highly translucent ingots indicated for smaller restorations such as inlays, onlays & veneers.  
Available in 3 shades

### Ordering Information :

VINTAGE LD Translucent Ingots 3g x 5

SHADE	PN
TO1	8530
TO2	8531
TO3	8532



## VINTAGE LD PRESS - TRIAL KIT

The VINTAGE LD press trial - kit is a vial of VINTAGE LD Press Ingots which consists of 5 common shades for Introduction and trial of the pressed ceramics.

### Ordering Information :

VINTAGE LD Press Trial-Kit

SHADE	PN
Kit	8542





## VINTAGE LD POWDER SYSTEM

VINTAGE LD low fusing silicate glass ceramic specifically matched with lithium disilicate ceramics, exhibits a micro-fine particle structure to efficiently simulate light transmission and diffusion of natural enamel/dentin.

Based on vita classical shades, this easy to use, highly polishable aesthetic porcelain is efficiently built up to full contour with the conventional layering technique or to modify shades of VINTAGE LD press or compatible press-ceramic framework materials.

## VINTAGE LD OPAQUE DENTIN POWDER

The LD opaque dentin porcelain is designed to replicate areas of deep dentin and where the color of the opaque appears too dominant.

### Ordering Information :

VINTAGE LD Opaque Dentin

SHADE	PN (15g)
OD-A1	8550
OD-A2	8552
OD-A3	8553
OD-A3.5	8554
OD-A4	8555
OD-B2	8556
OD-B4	8557
OD-C2	8558
OD-C4	8559
OD-D3	8560
OD-N	8562



## VINTAGE LD BODY

The LD body porcelain offers great handling and a wide shade range in order to best replicate the natural dentin of the tooth.

SHOFU recommends that the LD Body porcelain models the final anatomical form of the tooth through the “cut back technique” wherein after layering the complete anatomy with the Body porcelain it is condensed and is cut back labially and inter proximally which further determines the correct placement of opal enamel porcelain ensuring natural life like aesthetics is achieved.

### Ordering Information :

VINTAGE LD Body

SHADE	PN (15g)	PN (50g)
A1-B	8570	8610
A2-B	8571	8612
A3-B	8572	8613
A3.5-B	8573	8614
A4-B	8574	8615
B1-B	8575	8616
B2-B	8576	8617
B3-B	8577	8618
B4-B	8578	8619
C1-B	8579	8620
C2-B	8580	8621
C3-B	8581	8622
C4-B	8582	8623



SHADE	PN (15g)	PN (50g)
D2-B	8584	8624
D3-B	8585	8625
D4-B	8586	8626
W3-B	8587	8627



## VINTAGE LD OPAL ENAMEL

The LD Opal Enamel porcelain powder has a structure and particle distribution to yield a very natural enamel like appearance. This property enables the bluish translucency and diffused orange color of natural enamel to be reproduced without the addition of color effects.

Thus vital and aesthetic restorations can be produced using a simple two layer technique (Body & Enamel).

### Ordering Information :

VINTAGE LD Opal Enamel

SHADE	PN (15g)	PN (50g)
OPAL 56	8590	8630
OPAL 57	8592	8631
OPAL 58	8593	8632
OPAL 59	8594	8633
OPAL 60	8595	8634



## VINTAGE LD OPAL EFFECT

The LD Opal Effect porcelain transmits light similar to natural enamel thus produces opalescence effect enhancing the overall aesthetics.

### Ordering Information :

VINTAGE LD Opal Effect

SHADE	PN (15g)	PN (50g)
OPAL-T	8596	8635
OPAL-SL	8597	8636



### Available in 2 shades :

- **Opal T (Translucent)** - Regular opalescent translucent porcelain
- **Opal SL (Super lucent)** - A slightly bluish porcelain with higher opalescent translucency

## VINTAGE LD ENAMEL EFFECT

The LD Enamel Effect porcelain provides various levels of translucency without opalescence to reproduce detailing and individual characterisations of enamel which enhances the overall aesthetic harmony of the restoration.

### Ordering Information :

VINTAGE LD Enamel Effect

SHADE	PN (15g)	PN (50g)
T	8606	8645
T-GLASS	8598	8637
BT	8599	8638
PT	8600	8639
GT	8602	8640
YT	8603	8642
OT	8604	8643



Available in 7 varieties of translucencies :

- **T** - Translucent
- **T - Glass** - Highly Translucent (Glass like) porcelain
- **BT** - Bluish Translucent porcelain
- **PT** - Pinkish Translucent porcelain
- **GT** - Greyish Translucent porcelain
- **YT** - Yellowish Translucent porcelain
- **OT** - Orangish Translucent porcelain

## VINTAGE LD COLOR EFFECT

The LD color effect offers precise color detailing of the incisal areas.

### Ordering Information :

VINTAGE LD Color Effect

SHADE	PN (15g)	PN (50g)
AM-Y	8605	8644



Available as 1 Shade

- **AM - Y** - Amber Yellow

## VINTAGE LD GUM

The LD Gum porcelain is pink shaded for reproducing gum shades. Available in 6 Shades

### Ordering Information :

VINTAGE LD Gum

SHADE	PN (15g)
GUM 1	8590
GUM 2	8592
GUM 3	8593
GUM 4	8594
GUM 5	8595



## VINTAGE LD ADD-ON

The LD Add-On porcelain allows you to efficiently do final corrections or Add On's to mask any deficiency / defects after contouring or self-glazing.

### Ordering Information :

VINTAGE LD Add-On

SHADE	PN (15g)
B	8660
T	8662



Available in 2 Types :

Add-On B : Body  
Add-On T : Translucency

## LIQUID SYSTEM

### VINTAGE MIXING LIQUID HC

The VINTAGE Mixing Liquid HC provides an Ideal consistency and improves the overall handling properties of all porcelain powders. Can be used singularly or mixed with distilled water or vintage mixing liquid.

### Ordering Information :

VINTAGE Mixing Liquid HC

PACKAGING	PN
50 ml	9613
500 ml	9614





## **LOW FUSION STAINING SYSTEM DEVELOPED SPECIALLY FOR LITHIUM DISILCATE BASED GLASS CERAMICS**

### **VINTAGE ART LF STAINING**

VINTAGE ART LF is a ready to use, Low-Fusing fluorescent paste stain designed for Individualized aesthetic enhancement of VINTAGE LD Press and VINTAGE LD veneering porcelain system. Microfine particle structure and a homogenous consistency enables out of the box, easy application without the need of laborious mixing.

A comprehensive range of 23 different shades and a glazing paste easily mimic intricate shade characteristics seen in natural teeth in VINTAGE LD as well as other dental ceramic systems (VINTAGE Halo & VINTAGE ZR)

## STAINING SYSTEM

### VINTAGE ART LF STAINS

#### Ordering Information :

VINTAGE ART LF Stains

SHADE	PN ( 3g )
P	8671
Y	8672
BL	8673
O	8674
V	8675
Gr	8676
B	8677
W	8678
Dr-Br	8679
O-Br	8680
K	8682

SHADE	PN ( 3g )
G	8683
BL-G	8684
CY	8685
Br	8686
B-Br	8687
RP	8688
WR	8689
AS	8690
BS	8691
CS	8692
DS	8693
Vn	8694



The VINTAGE ART LF is available in 23 Shades :

- **P** - **Pink**, for shade adjustments and gum areas
- **Y** - **Yellow**, for shade adjustments and cervical areas
- **BL** - **Blue**, for shade adjustments and incisal areas
- **O** - **Orange**, for shade adjustments, cervical areas and Staining
- **V** - **Violet**, for shade adjustments, incisal and gum areas
- **Gr** - **Green**, for shade adjustments and staining
- **B** - **Black**, for shade adjustments, staining and incisal areas
- **W** - **White**, for incisal areas
- **DR-Br** - **Dark Red Brown**, for cervical areas and staining
- **Br** - **Brown**, for cervical areas and staining
- **O-Br** - **Orange Brown**, for cervical areas and staining
- **B-Br** - **Black Brown**, for cervical areas and staining
- **K** - **Khaki**, for cervical areas and staining
- **G** - **Gray**, For Adjustments and Incisal Areas
- **BL-G** - **Blue Gray**, for incisal areas
- **CY** - **Corn Yellow**, for cervical and gum areas
- **RP** - **Rose Pink**, for cervical and gum areas
- **WR** - **Wine Red**, for cervical areas
- **Vn** - **Vannila**, for incisal areas
- **AS** - **A Shade**, for all A shade adjustments and cervical areas
- **BS** - **B Shade**, for all B shade adjustments and cervical areas
- **CS** - **C Shade**, for all C shade adjustments and cervical areas
- **DS** - **D Shade**, for all D shade adjustments and cervical areas

## VINTAGE ART LF STAIN LIQUID

The VINTAGE Art LF Stain Liquid serves to be an Ideal mixing liquid to be used with the ART LF stains To improve the handling and ease of placement of stains precisely.

### Ordering Information :

VINTAGE ART LF Stain Liquid

PACKAGING	PN
50 ml	8695



## GLAZING SYSTEM

### VINTAGE ART LF GLAZE PASTE

The VINTAGE Art LF glaze paste is an easy to apply low fusion stain system particularly designed for VINTAGE LD (Lithium Disilicate porcelain system) in order to give the final polish and lustre to the restoration thus making them more life-like and provides the technician the extra edge to enhance aesthetics.

It can also be used for other Porcelain Systems namely VINTAGE ZR & VINTAGE Halo.

### Ordering Information :

VINTAGE ART LF Glaze Paste

PACKAGING	PN
3g	8670



## SET PACKAGING

### VINTAGE LD BASIC SET

The VINTAGE LD Basic Set is a standard set that comes with the basic shades of the VINTAGE LD veneering ceramic and stains with compatible mixing liquids that can be used for cut back, full build up layering or just staining of VINTAGE LD lithium disilicate restorations.

#### Ordering Information :

VINTAGE LD Basic Set

PACKAGING	PN
Set	8500



#### Packaging :

Body 15g x 6 (A1B, A2B, A3B, A3.5B, B2B, B3B)

Opal Enamel 15g x 4 (Opal 57, Opal 58, Opal 59, Opal 60)

Opal Effect 15g x 1 (Opal T)

VINTAGE Art LF Stains 3g x 4 (W,BI-G, AS, BS)

VINTAGE Art LF Stain Liquid 50ml x 1

VINTAGE Art LF Glaze Paste 5g x 1

VINTAGE Mixing Liquid 50ml x 1

### VINTAGE LD ENAMEL EFFECT SET

The VINTAGE LD enamel effect set with 10 different enamel shades for the ceramist to mimic natural shade representation with varying levels of translucencies.

#### Ordering Information :

VINTAGE LD Enamel Effect Set

PACKAGING	PN
Set	8503



#### Packaging :

Opal Enamel 15g x 1 (Opal 56)

Enamel Effect 15g x 9 ( T, T-Glass, SL, BT, PT, GT, YT, OT, AM-Y)

# VINTAGE ART LF EFFECT SET

The VINTAGE Art LF effect shades contains an assortment of low fusing ART stains ideally used to carry out all basic and essential staining and shade adjustments.

**Ordering Information :**

VINTAGE Art LF Effect Set

PACKAGING	PN
Set	8504



**Packaging :**

Vintage ART LF Stains 3g x 17 ( Pink, Rose-Pink, Corn-Yellow, Blue Gray, Gray, Orange, Violet, Wine-Red, Vannila, White, Orange-Brown, Black-Brown, Khaki, A-Shade, B-Shade, C-Shade, D-Shade)

Vintage Art LF Glaze Paste 5g x 1

Vintage Art LF stain liquid 50ml x 1





## **6.CROWN & BRIDGE COMPOSITE**

### **CERAMAGE**





## **CROWN AND BRIDGE COMPOSITE SYSTEM WITH CERAMIC LIKE STRENGTH, DURABILITY AND AESTHETICS**

CERAMAGE has crossed a milestone in indirect resin technology and consistently exceeded the expectations of the dental team by combining exceptional aesthetics, superior mechanical properties and long term color stability with minimal abrasion of the opposing dentition.

This micro-ceramic polymer system contains 73% zirconium silicate fillers (PFS- Progressive Fine Structured Fillers) evenly distributed in an organic polymer matrix, to ensure a durable surface quality with excellent polish and high plaque resistance, ideal for both metal-supported and metal free anterior as well as posterior restorations.

Known for ceramic-like image, CERAMAGE exhibits life like aesthetics and exceptional translucency while its comprehensive shade spectrum enables the simulation of a wide range of surface textures, as discrete as those seen in the natural teeth and gum.

**Benefits :**

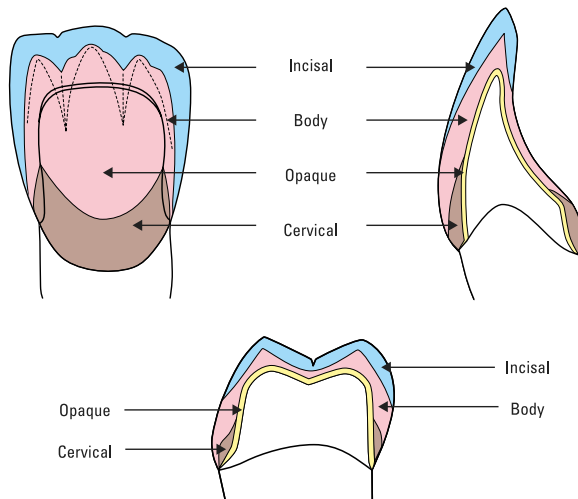
- Superior aesthetics with easy reproduction of natural color tooth
- Excellent flexural and compressive strength
- Long term color stability
- Ideal viscosity with optimum handling properties
- Easy to sculpt, non sticky and easy to separate from spatula
- Remarkable abrasion resistance
- High elasticity suitable for posterior restorations
- Superior polish and high plaque resistance
- Extensive range of translucent incisal, effect modifiers, gum and whitening shades
- Natural fluorescence and opalescence
- Simple polymerization system with a fast application technique

**Indications :**

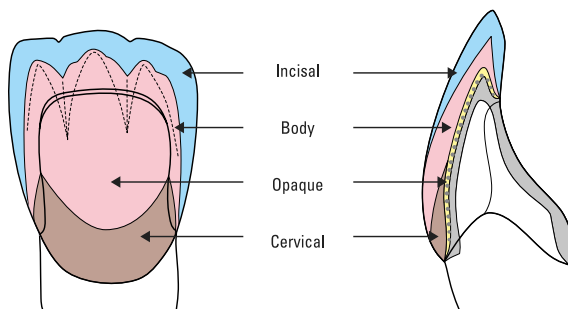
- Metal or fiber reinforced crowns and bridges
- Veneers and jacket crowns
- Fully veneered telescopic and implant supported work
- Precision attachment work
- Reinforced occlusal restorations
- Inlays/Onlays
- Long term temporary restorations
- Modification of conventional acrylic resin teeth
- Repair of porcelain or indirect resin restorations
- Gum composites can be used in implant supported super structures, removable prosthesis such as partial dentures and telescopic restorations
- Also to restore missing or receded gums in veneers, crowns and bridges, precision attachment restorations etc

## LAYERING REPRESENTATIONS

### Layering technique for jacket crowns



### Layering technique for faced crowns



## CURING INFORMATION

### 5-1. Curing time

Light-Cure	Solidilite EX	UNI-XS Dentalcolor XS – Kulzer
Pre-Opaque	1 min	1.5 min
Opaque	3 min	3 min
Composite (pre-light-cure)	1 min	1.5 min
Flowable composite (pre-light-cure)	1 min	1.5 min
Pontic	3 min	3 min
Final	5 min	3 min

Light-Cure	Liculite / de Trey Polylux HDS 400 / Dreve	Labolight LV II + LV III GC
Pre-Opaque	3 min	2 min
Opaque	5 min	3 min
Composite (pre-light-cure)	3 min	2 min
Flowable composite (pre-light-cure)	3 min	2 min
Pontic	5 min	3 min
Final	10 min	5 min

**Note:** CERAMAGE composites can be light cured in all light curing units recommended by SHOFU. The types of unit and light cure times are shown in the curing-chart. In order to guarantee a perfect light-curing of the CERAMAGE materials, take care that the work to be cured is placed at optimal position to the ray of light-curing. Please consider the corresponding manufacturer's instructions when operating the light curing devices.

### 5-2. Depth of cure

System	Shade	Curing Time (Solidilite EX)	Depth of Cure (mm)
Pre-Opaque		1 min	1.6
Opaque	A10	3 min	0.24
	A30	3 min	0.21
	A40	3 min	0.20
Cervical	AC1	1 – 5 min	1.3 – 1.8
	AC2	1 – 5 min	1.0 – 1.4
Opaque Dentine	ODA	1 – 5 min	1.8 – 2.5
	ODA3	1 – 5 min	1.5 – 2.1
	ODA4	1 – 5 min	1.2 – 1.6
Body	A1B	1 – 5 min	2.5 – 3.4
	A3B	1 – 5 min	1.8 – 2.6
	A4B	1 – 5 min	1.8 – 2.5
Incisal	56	1 – 5 min	4.2 – 6.8
	59	1 – 5 min	4.0 – 5.8
	61	1 – 5 min	3.8 – 5.5
Translucent	T	1 – 5 min	5.5 – 8.6
	T-Glass	1 – 5 min	6.2 – 9.6
Concentrate	MI	1 – 5 min	2.4 – 3.4
	OC	1 – 5 min	3.7 – 6.3
	AM-Y	1 – 5 min	3.2 – 4.6
	MY	1 – 5 min	1.6 – 2.4
	GUM-D	1 – 5 min	1.4 – 2.0
Opaque Dentine	F-ODA3	1 – 5 min	1.6 – 2.2
Body	F-A3B	1 – 5 min	2.0 – 2.7
Incisal	F-59	1 – 5 min	4.3 – 6.1
Translucent	F-T-Glass	1 – 5 min	6.6 – 10.4

## PASTE SYSTEM

### CERAMAGE UNIVERSAL PRE OPAQUE

Forms the first layer of the fabrication process.

Highly flowable, flows easily even into small areas of retainers. Its increased depth of cure ensures light-curing, producing a strong CERAMAGE Pre-Opaque bond.

Available as One Universal shade.

**Ordering Information :**  
CERAMAGE Universal Pre Opaque

PACKAGING	PN
2 ml	2111



### CERAMAGE UNIVERSAL OPAQUE

CERAMAGE Universal Opaque is a micro-filled opaque paste that is easy to apply and uniformly mask the underlying frame or discoloured tooth abutment to achieve an excellent match to natural tooth.

**Ordering Information :**  
CERAMAGE Universal Opaque

SHADE	PN (2ml)
A1O	2080
A2O	2081
A3O	2082
A3.5	2083
A4O	2084
B1O	2085
B2O	2086
B3O	2087
B4O	2088
C1O	2089
C2O	2090
C3O	2091
C4O	2092
MO	2106
InO	2107
VpO	2108

SHADE	PN (2ml)
D2O	2093
D3O	2094
D4O	2095
ROOTAO	2096
R2O	2097
R3O	2098
R3.5O	2099
WO	2100
W2O	2101
W3O	2102
GUMO	2103
BGO	2104
GO	2105
VrO	2109
PO	2110



Available in 31 shades, in addition to the basic shades following special shades are also available :

- **MO - Margin Opaque**, applied after pre-opaque in widths of 1mm around the cervical margins for masking exposed alloy
- **BGO - Blue Gray Opaque/Incisal Opaque**, for transparent areas
- **GO - Gray Opaque**, for transparent areas and for adjusting the brightness of the opaque
- **WO - White Opaque**, for adjusting the brightness of the opaque
- **GUM-O - Gum Opaque**, for coloring and preparing the framework for gum color
- **InO - Incisal Opaque**
- **VpO - Value Plus Opaque**
- **VrO - Value Reduce Opaque**
- **PO - Pink Opaque**

## CERAMAGE OPAQUE DENTIN

CERAMAGE Opaque Dentin with high filler content mimic deep dentin layers where the color of the opaque appears more dominant.

### Ordering Information :

CERAMAGE Opaque Dentin

SHADE	PN (2.6 ml)
OD-A1	1851
OD-A2	1852
OD-A3	1853
OD-A3.5	1854
OD-A4	1855
OD-ROOTA	1867
OD-B1	1856
OD-B2	1857
OD-B3	1858
OD-B4	1859

SHADE	PN (2.6 ml)
OD-C1	1860
OD-C2	1861
OD-C3	1862
OD-C4	1863
OD-D2	1864
OD-D3	1865
OD-D4	1866
ODR2	1868
ODR3	1869
ODR3.5	1870



## CERAMAGE CERVICAL

CERAMAGE Cervical are used to replicate the deep cervical areas of natural teeth and offer excellent mechanical and optical properties to best match Nature.

### Ordering Information :

CERAMAGE Cervical

SHADE	PN (2.6 ml)
AC1	1881
AC2	1882
BC1	1883
BC2	1884
CC1	1885
CC2	1886
DC1	1887
DC2	1888



## CERAMAGE BODY

CERAMAGE Body offers easy handling and a wide shade range in order to best replicate the natural dentin of the tooth.

### Ordering Information :

CERAMAGE Body

SHADE	PN (2.6 ml)
A1B	1901
A2B	1902
A3B	1903
A3.5B	1904
A4B	1905
ROOTAB	1917
B1B	1906
B2B	1907
B3B	1908
B4B	1909
R2B	1918
R3B	1919
R3.5B	1920



SHADE	PN (2.6 ml)
C1B	1910
C2B	1911
C3B	1912
C4B	1913
D2B	1914
D3B	1915
D4B	1916
W0B	1924
W1B	1925
W2B	1926
W3B	1927

## CERAMAGE INCISAL/ENAMEL

CERAMAGE Enamel / Incisal paste mimics the translucent enamel layer and exhibits optical properties similar to natural enamel thus giving the overall restoration life like aesthetics.

### Ordering Information :

CERAMAGE Incisal/ Enamel

SHADE	PN (2.6 ml)
56	1891
57	1892
58	1893
59	1894
60	1895
61	1896





## CERAMAGE TRANSLUCENT

CERAMAGE Translucent is used in the incisal areas to impart various degrees of translucencies and thus helps in detailing and reproducing life like aesthetics.

### Ordering Information :

CERAMAGE Translucent

SHADE	PN (2.6 ml)
T	1931
HVT	1932
LVT	1933
T-GLASS	1934
BG	1935
GT	1936
CT-A	1937
CT-B	1938
CT-R	1939
GUM-T	1940



### Available in 10 shades :

- **T** - Translucent
- **HVT** - High Value Translucent
- **LVT** - Low Value Translucent
- **T-GLASS** - Translucent Glass, imparts higher degree of translucency
- **BG** - Blue Glass, Light Blue T-Glass
- **GT** - Gray Trans, imparts grayish Translucency
- **CT-A** - Cervical Trans A, for A shade range imparting orange tone in cervical areas
- **CT-B** - Cervical Trans B, for B shade range imparting yellowish tone in cervical areas
- **CT-R** - Cervical Trans R, for R shade range imparting reddish tone in cervical areas
- **GUM-T** - Gum Trans, for translucent gingival areas

## CERAMAGE CONCENTRATE

CERAMAGE Concentrate provides the necessary armamentarium to produce fine, precise detailing which gives an extra edge to replicate life like aesthetics considering the fact that natural enamel reflects various wavelengths of light.

### Ordering Information :

CERAMAGE Concentrate

SHADE	PN (2.6 ml)
MI	1951
WE	1952
OC	1953
AM-Y	1954
AM-R	1955
AM-V	1956
MY	1957
MP	1958
GUM-L	1959
GUM-D	1960
GUM-OR	1961



### Available in 11 Shades :

- **MI** - **Milky**, opaque white paste for reproducing Milky characterization in enamel
- **WE** - **White Enamel**, slightly opaque paste for marginal ridges of molars and proximal areas of anterior teeth
- **OC** - **Occlusal**, slightly opaque white paste for occlusal surfaces of molars, etc
- **AM-Y** - **Amber Yellow** (Yellowish)
- **AM-R** - **Amber Red** (Reddish)
- **AM-V** - **Amber Violet** (Violet range)
- **MY** - **Mamelon Yellow**, opaque paste for reproducing mamelons (yellowish)
- **MP** - **Mamelon Pink**, opaque paste for reproducing mamelons (pinkish)
- **GUM-L** - **Gum Light**, for reproducing gingival areas (lighter shade)
- **GUM-D** - **Gum Dark**, for reproducing gingival areas (darker shade)
- **GUM-OR** - **Gum Orange**, for reproducing gingival areas (Orange shade)

## CERAMAGE FLOWABLE

CERAMAGE Flowable, smooth flowing composite, facilitates simulation of intricate anatomical details and effortless application in difficult, inaccessible areas, flows into small areas, can be used for restoring voids caused by air bubbles, filling pontics and also fine adjustments of the shade and contour.

### Ordering Information :

CERAMAGE Flowable

SHADE	PN (2.6 ml)
F-OD A3	1871
F-A3B	1921
F-ROOTAB	1922
F-59	1897
F-T GLASS	1941
F-CT	1944
F-BT	1945
F-BR	1942
F-W	1943
F-GUM-BR	1946
F-GUM-V	1947
F-GUM-R	1948



### Available in 12 Shades :

**F-OD A3** - Flowable Opaque Dentin A shade, used in deep dentin areas where opaque shade is concentrated

**F-A3B** - Flowable Body A shade, used in reproduce dentin areas

**F-ROOTAB** - Flowable Root Body A shade, used to produce root like effects and used in cervical areas

**F-59** - Flowable Enamel/Incisal, to reproduce enamel/ incisal areas

**F-T-GLASS** - Flowable Translucent Glass, provides higher degree of translucency to the Enamel areas

**F-CT** - Flowable Cervical Trans, used in Cervical areas and offers an ideal translucency

**F-BT** - Flowable Blue Trans, to alter translucency more towards Bluish shade

**F-BR** - Flowable Brown, Color effect (Brownish)

**F-W** - Flowable White, Color effect (Whitish)

**F-GUM-BR** - Flowable Gum Brown, for gingival areas

**F-GUM-V** - Flowable Gum Violet, for gingival areas

**F-GUM-R** - Flowable Gum Red, for gingival areas

## CERAMAGE GUM :

The CERAMAGE GUM offers an excellent armamentarium to best replicate gingival shades as close to the remaining natural gingiva thus enhancing the overall aesthetics of the restoration

### Ordering Information :

CERAMAGE GUM

SHADE	PN (2.6 ml)
L	1959
D	1960
OR	1961



### Available in 3 types :

GUM - L : Lite Pink

GUM - D : Dark Pink

GUM - OR : Orange

## LIQUID SYSTEM

### CERAMAGE MODELLING LIQUID

CERAMAGE Modelling Liquid, a colorless unfilled resin that aids in adapting the ceramage paste and acts as a wetting agent to restore the dispersion layer after contouring with abrasives.

#### Ordering Information :

CERAMAGE Modelling Liquid

PACKAGING	PN
6 ml	1991



### CERAMAGE SPACER AND SEP

CERAMAGE Spacer Liquid, allows space for the Luting material and is used in fabricating Jacket crowns, Inlays and onlays.

CERAMAGE Sep Liquid, a separating liquid for use between plaster and CERAMAGE composites and is used in fabricating jacket crowns, inlays, onlays and veneers.

#### Ordering Information :

CERAMAGE Spacer & Sep

PACKAGING	PN
Spacer 7 ml	1994
Separator 7 ml	1993



### CERAMAGE OXY BARRIER

CERAMAGE Oxy-Barrier, an inert gel applied before final curing, it protects the composite surface against the influence of oxygen to assure optimal cure and prevent the creation of the inhibition layer.

#### Ordering Information :

CERAMAGE Oxy-Barrier

PACKAGING	PN
10 ml	1992



# LITE ART

## CERAMAGE STAINING SYSTEM

Lite Art is a new generation of light cured resin stains created for characterization and shade modification of Indirect resin restorations, artificial teeth and acrylic denture bases.

These stable, fluorescent stains can be used on their own or intermixed to attain vibrant shades that closely mimic natural tooth coloration and elaborate surface details.

Lite Art is formulated with novel multifunctional monomers and photo initiators that assure an easy application in Thin, even layers similar to ceramic stains and optimize surface cure for a stable, impervious color.

### INDICATIONS :

- Individual Characterization of Indirect Composite crowns, bridges, inlays, onlays, veneers etc
- Customized Staining of artificial (resin) teeth
- Characterization of prosthesis base such as partial or complete dentures, gum colored telescopic and implant supported restoration
- Harmonization of temporary framework and tooth colored resins, PMMA frameworks, Long term temporaries

### COLOR CONCEPT :

The Color Concept is based on the comprehensive Munsell color system and adopts the subtractive color mixing theory to create a range of brilliant shades, consistent with our Vintage Art porcelain stain colors, Lite Art color spectrum onclosed especially formulated vivid stains in 3 primary colors:

- CYAN
- MAGENTA
- YELLOW

Composed of organic color pigments.

Various combinations of primary color stains mixed with Black or White offer a vivid spectrum of shades for easy simulation of the desires shade modification

## STAINING SYSTEM

### VINTAGE LITE ART STAINS

Lite Art comes in a versatile spectrum of 12 premixed colors that simulate the various nuances seen in natural teeth as well as the varied pigmentation in the gingiva:

#### Ordering Information :

LITE ART Stain Paste

SHADE	PN (1 ml )
W	1971
B	1972
R	1973
AS	1974
BS	1975
K	1976
O	1977
BL-G	1978
V	1979
O-BR	1980
DR-BR	1981
B-BR	1982
CYAN	1983
MAGENTA	1984
Y	1985



- Lite Art W** - **White**, For staining, incisal areas and color mixing
- Lite Art B** - **Black**, or shade adjustments, staining and color mixing
- Lite Art R** - **Red**, for gingival areas and color mixing
- Lite Art AS** - **A-Shade**, for shade adjustments and cervical areas
- Lite Art BS** - **B-Shade**, for shade adjustments and cervical areas
- Lite Art K** - **Khaki**, for cervical areas and staining
- Lite Art O** - **Orange**, for shade adjustments, cervical areas and staining
- Lite Art BI-G** - **Blue gray**, For Incisal areas
- Lite Art V** - **Violet**, for shade adjustments, incisal and gum areas
- Lite Art O-Br** - **Orange Brown**, for cervical areas, staining and incisal areas
- Lite Art DR-Br** - **Dark Red Brown**, for cervical areas and staining
- Lite Art B-Br** - **Black Brown**, For cervical areas and staining
- Lite Art Cyan** - **Cyan**, for color mixing
- Lite Art Magenta** - **Magenta**, for color mixing
- Lite Art Y** - **Yellow**, for color mixing

### VINTAGE LITE ART CLEAR LIQUID

Lite ART Clear Liquid is used for manipulation, adaptation and mixing of Lite Art stain pastes.

#### Ordering Information :

LITE ART Clear Liquid

PACKAGING	PN
6 ml	1986





## **7.PRIMING AND BONDING SYSTEM**



## AZ PRIMER

### A UNIQUE INNOVATION TO PROVIDE A STABLE AND DURABLE BOND WITH ZIRCONIA RESTORATIONS

#### Benefits :

- Exclusively developed for the modern materials zirconia and alumina
- The 6-MHPA monomer, specially adapted for high performance porcelains, anchors itself permanently to the restoration

#### Indications :

For adhesive bonding of porcelains compatible with zirconia

#### Ordering Information :

AZ Primer

PACKAGING	PN
5 ml	3232

#### Packaging :

Bottle of 5ml



## PORCELAIN PRIMER

### IDEAL, EASY TO APPLY SILANE COUPLING AGENT TO INCREASE BOND STRENGTH OF RESIN MATERIALS OVER PORCELAIN

Contains silane coupling agent to prime feldspathic porcelain and indirect composite restorations to enhance bond strength during Intra oral cementation or repair of restorations.

#### Ordering Information :

Porcelain Primer

PACKAGING	PN
5 ml	3234

#### Packaging :

Bottle of 5ml



## M.L. PRIMER

### PRIMING METAL SURFACE TO BEST RECEIVE A MASKING RESIN MATERIAL

A single bottle metal bonding primer, which enhances the bonding of resin materials to a wide variety of dental metals such as semi-precious, precious and non-precious metal.

#### Ordering Information :

ML Primer

PACKAGING	PN
5 ml	1740

#### Packaging :

Bottle of 5ml





## P & R REPAIR KIT

### ASSORTMENT OF PRIMERS AND BONDING AGENT FOR REPAIR OF PORCELAIN WITH OR WITHOUT METAL EXPOSURE

New versatile light-cure bonding system that can be used clinically for the repair of fractured ceramic or indirect composite restorations intra-orally even when metal is exposed and chairside adjustment and repair of prosthesis.

Consists of

**M.L. Primer** - Metal link primer to enhance bond between resin materials a wide variety of metal alloys

**Cera Resin Bond 1** : Acts as a silane coupling agent

**Cera Resin Bond 2** : Bonding agent that creates a strong & durable bond

#### Ordering Information :

P&R Repair Kit

PACKAGING	PN
Set	1739



#### Packaging:

M.L. Primer 5ml, CRB1 6ml, CRB2 5ml,  
Micro brushes 25 each, Dispo dish x 5 (pink&yellow)



## CERA RESIN BOND SET

A 2 step light cure bonding system specifically designed to repair fractured porcelain or indirect composite resin restorations.

It provides an excellent bond between ceramic and resin restorations.

**Cera Resin Bond 1 (CRB 1)** - acts as silane coupling agent

**Cera Resin Bond 2 (CRB 2)** - bonding agent which provides a thin, transparent layer with a strong and durable bond for the resin

### Ordering Information :

Cera Resin Bond Set

PACKAGING	PN
5 ml	1741



### Packaging :

CRB 1 : 6ml, CRB2 : 5ml, Microbrushes x 25 each (pink&yellow), Instructions, Dispo Dish x 5



## 8.ABRASIVE SYSTEM KITS



## CERAMAGE POLISHING KIT

### SPECIALLY DESIGNED FOR SYSTEMATIC POLISHING OF INDIRECT COMPOSITES

A careful selection of trimming, finishing and polishing instruments for a precise functional and aesthetic enhancement of indirect composites. (Ceramage)

#### Ordering Information :

Ceramage Polishing Kit

PACKAGING	PN
Kit	5948



#### Packaging :

The Kit contains :-

- Robot Carbide fissure bur HP
- Silicone Points HR2 each of 11, 13S & 2pc of 28
- SHOFU Pivot Brush x 1
- SHOFU Pivot Brush SC x 1
- SHOFU Mandrels x 2
- Dura-Polish 20g x 1 jar
- Dura Polish Dia 5g x 1 jar
- Shofu felt wheels x 3 No. 1602 (16mm diameter, 2mm thickness) x 2 & No.2405 x 1 (24mm diameter, 5mm thickness)

## ZILMASTER FINISHING AND POLISHING KIT

### ADVANCED DIAMOND IMPREGNATED POLISHERS FOR ENHANCED GLAZE LIKE POLISHING OF ALL CERAMIC RESTORATIONS

#### Benefits :

- Produces High Gloss because of the Precise Concentricity with uniform distribution of even sized diamond particles in a resilient silicone compound
- This Unique Formulation ensures efficient performance with low vibration and minimal heat generation reducing the risk of Micro Cracks



#### Indications :

Three step polishing system specifically designed for all-ceramic restorations including Lithium disilicate and fully contoured Zirconia restorations

ZiLMaster Coarse (green banded shank)

For finishing and pre-polishing.

ZiLMaster Medium (blue banded shank)

For polishing.

ZiLMaster Fine (yellow banded shank) - For super polishing

#### Packaging :

ZiLMaster Finishing & Polishing Kit (HP) contains :

Dura Green Dia - TC4, KN7 & WH6 x 1 each

ZiLMaster Coarse - Bullet, KN7 & WH6 x 1 each

ZiLMaster Medium - Bullet, KN7, & WH6 x 1 each

ZiLMaster Fine - Bullet, KN 7, & WH6 x 1 each

#### Ordering Information :

ZiLMaster Finishing and Polishing Kit

PACKAGING	PN
Kit	S0009



## INDIVIDUAL ABRASIVE INFORMATION

### ROTARY INSTRUMENTS :

SHOFU Rotary Instruments are available in a wide range of shapes and shanks depending on the type of handpiece, used by the dentists as well as the dental technician, on a variety of substrates. Complete insertion of these instruments into the specific handpiece - straight / contra angle / turbine is recommended to avoid jamming and excessive wear while ensuring precise performance and longevity of both the handpiece as well as the rotary instruments.

#### Rotary instruments come in 3 different Shanks :

##### HP (Straight Handpiece) Shank

A smooth, precise HP shank is attached to the chuck Of the straight handpiece.

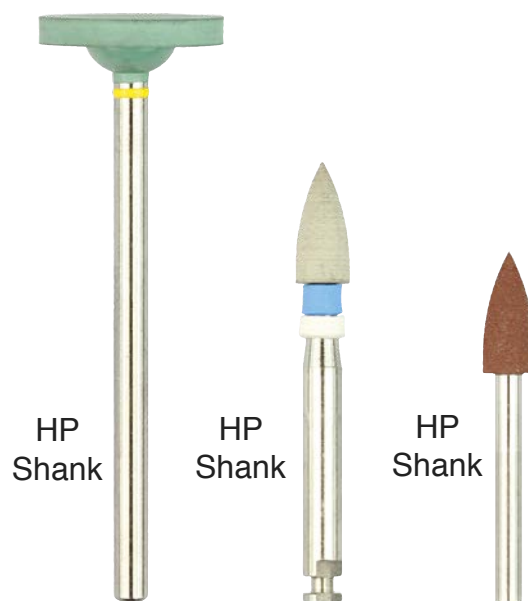
Standard Diameter of HP shank : 2.35 mm

##### CA (Contra Angle) Shank

A precisely shaped CA shank fits positively on a CA Handpiece and is manually locked in place with the Aid of a groove at the lower end of the shank. Standard diameter of CA shank : 2.35 mm

##### FG (Friction Grip) Shank

A smooth and even FG Shank used in a high speed turbine handpiece. Standard diameter of FG shank : 1.6 mm



## MANDRELS - HP

Stainless steel mandrels designed for use with all SHOFU unmounted abrasives

Designed to hold the unmounted polishers for an efficient abrasive action

#### Ordering Information :

MANDRELS - HP

#### Packaging

Box of 12's

PACKAGING	PN
Box	0781

## DURA GREEN & DURA GREEN FINE STONES

### Benefits

Made of high quality silicon carbide grit, dura green and dura green fine stones are durable, concentric and have excellent cutting efficiency

### Indications :

DURA GREEN - For fast contouring and finishing of porcelain, composite, precious alloys and amalgam restorations

DURA GREEN FINE STONES(yellow band) - Created for adding surface characteristics and adjusting details on porcelain and composites

### Ordering Information :

Dura-Green & Dura-Green Fine Stones

PACKAGING	QTY	PN
HP	12 pcs	0002-0098
HP Fine	12 pcs	011F-048F
HP	12 pcs	HG10-HG48



### DURA GREEN STONES

- Precise concentricity with low vibrations
- Consistent cutting efficiency
- Balance of binder & abrasive particle ensures durability & optimal cutting ability
- Available in a variety of shapes in HP and CA shanks and selected number of shapes in FG shank

### DURA GREEN FINE STONES(yellow band)

- Produced with a finer grit size with the same positive properties as the proven dura green stones
- Available only in HP shank.

### Packaging :

Individually packed in box of 12's

### Recommended Speed Range :

5000 - 20,000 rpm / Max 30,000 rpm

Contact pressure : 3-5 N





## DURA GREEN UNMOUNTED WHEELS

Made of High Quality Silicon Carbide Grits.

### Benefits :

- Durable and consistent performance
- Used with SHOFU HP mandrels
- Available in 3 different sizes

### Indications :

Designed for fast contouring and finishing of Porcelain and Non-Ceramic precious alloys

### Ordering Information :

Dura-Green UNMOUNTED WHEELS

PACKAGING	QTY	PN
1.6mm x HP	12 pcs	0150
2.4mm x HP	12 pcs	0151
3.2mm x HP	12 pcs	0152



### Packaging :

Individual shapes packed in a box of 12's

### Recommended Speed Range :

5000 - 15,000 rpm / Max 30,000 rpm

Contact pressure : 2 N



## DURA WHITE STONES

Dura white stones are vitrified bonded(Micro grained) aluminium oxide abrasives also known as 'Arkansas' stones developed for finishing of all types of dental materials.

### Benefits :

- Perfectly balanced to provide vibration free performance
- Precise concentricity & consistent performance
- Durable with high edge stability
- Available in HP/CA/FG shank



### Indications :

Ideal for finishing enamel, glass ionomer cement, composite, porcelain & prepared tooth abutment

### Packaging :

Individual shapes packed in a box of 12's

### Recommended Speed Range :

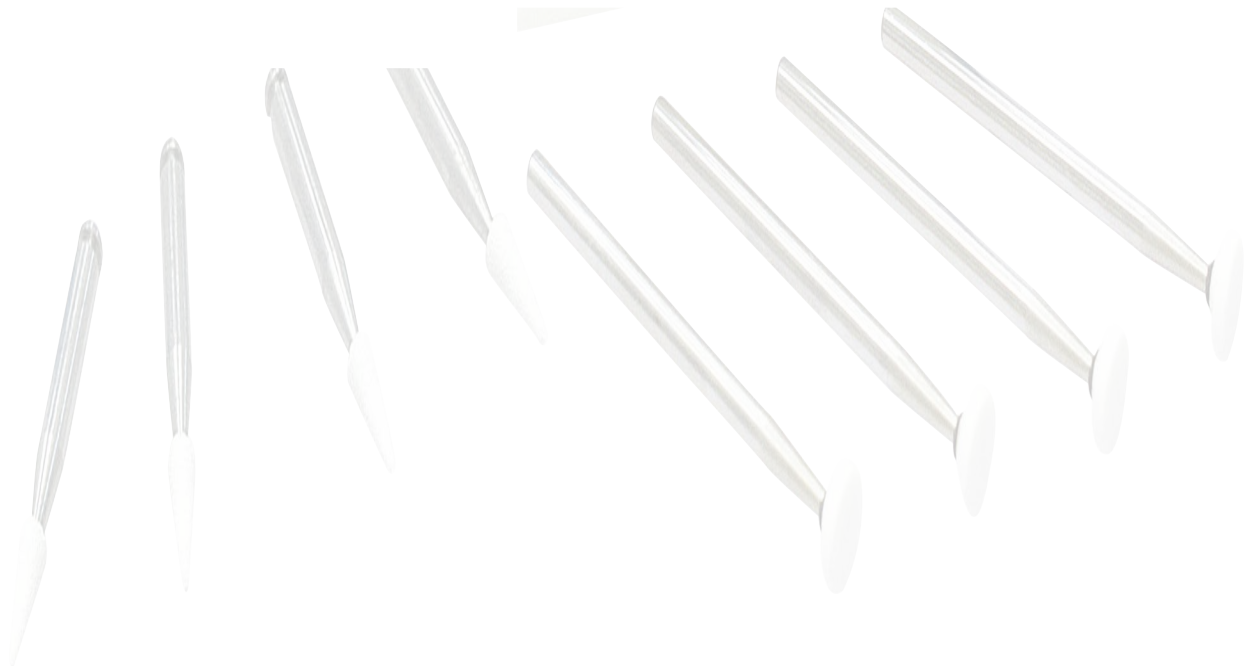
5000 - 20,000 rpm / Max 30,000 rpm

Contact pressure : 2 N

### Ordering Information :

Dura-White Stones

PACKAGING	QTY	PN
HP	12 pcs	0201-0250



## DURA WHITE STONES



Shape	RD1	RD2	RE1	TC1	TC4	WH1	WH4
ISO NO.	030	024	062	020	040	040	060
HP	0207	0208	0209	0210	0211		0212
CA	0227	0228	0229	0230			0232
FG	0247	0248		0249		0250	

Shape	CN1	CY2	FL1	FL2	FL3	IC4	KN1
ISO NO.	024	025	030	025	030	045	050
HP	0201		0202	0203	0204	0205	
CA	0221		0222	0223	0224		
FG	0241	0243	0240	0244			0246

## DURA GREEN DIA

Dura-Green DIA is a vitrified-diamond bonded abrasive designed to provide a consistently smooth, chipless cut without leaving any residual contamination.

### Benefits :

- A dense, well-balanced layering of diamond particles embedded from surface to core in a special glass binder ensures greater durability and cutting efficiency
- Air holes are optimally distributed in between to minimize clogging
- Low vibrations & minimal heat generations minimize the risk of micro fractures
- Low contact pressure & high edge stability
- Available in HP x 8 & CA x 3 , total of 11 shapes

### Indications :

- These unique abrasives are indicated for contouring and finishing all types of ceramics including conventional porcelain, alumina, zirconia, lithium disilicate and monolithic zirconia restorations

### Ordering Information :

Dura-Green DIA

PACKAGING	QTY	PN
KN7 - HP	2 pcs	0154
TC4, CY5 - HP	3 pcs	0155-0156
WH6 - HP	2 pcs	0157
FL3, RD3 - HP	3 pcs	0158-0159
IC5,TC2 - HP	2 pcs	0161-0162
CY5,KN7, TC4 - HP	3 pcs Assortment	0153



### Packaging :

Individual shapes packed in a box of 2's (CY5, KN7, WH6) and 3's (FL3, IC5, RD3, TC2, TC4)

### Also available in an assortment of 3 different shapes

HP - CY5, KN7, TC4 (PN 0153)

### Recommended Speed Range :

5000 - 20,000 rpm / Max 30,000 rpm

Shape	CY5	FL3	IC5	KN7	RD3	TC2	TC4	WH6
ISO NO.	056	031	070	125	035	025	040	125
HP	0156	0158	0162	0154	0159	0161	0155	0157
CA		0163			0164	0165		

## ZILMASTER

### Benefits-

- Produces high Gloss because of the precise concentricity with uniform distribution of even sized diamond particles in a resilient silicone compound
- This unique formulation ensures efficient performance with low vibration and minimal heat generation reducing the risk of micro cracks

### Indications-

Three step polishing system specifically designed for all-ceramic restorations including lithium disilicate and fully contoured zirconia restorations

ZiLMaster Coarse (green banded shank) - for finishing and pre-polishing.

ZiLMaster Medium (blue banded shank) - for polishing.

ZiLMaster Fine (yellow banded shank) - for super polishing



### Packaging

- Individual shapes packed in box of 3's
- Unmounted wheel is available individually with 1 pc mandrel

### Ordering Information :

ZiLMaster

PACKAGING	QTY	PN
Coarse,Medium Fine - HP x Bullet, Minipoint,KN7,WH6	3 pcs	0640-0643, 0646-0649, 0652-0655
Coarse,Medium, Fine x Unmounted wheel	1 pc	0645,0651, 0657

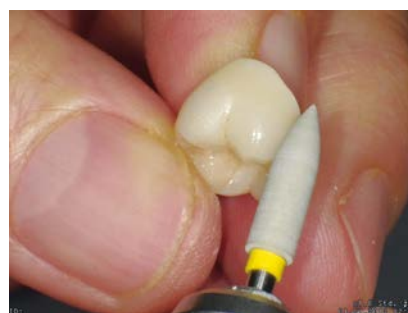
### Recommended Speed Range :

Mounted Polisher - 10,000 - 15,000 rpm/ Max 20,000 rpm

Unmounted Polisher - 5000 - 10,000 rpm/ Max 15,000 rpm

Contact pressure : 1.5 N

## ZILMASTER



	Shape	Bullet	Knife	Cup	Minipoint	KN7	WH6	Unmounted Wheel
	ISO NO.	040	090	065	030	125	120	170
<b>ZiLMaster Coarse</b>	HP 3 pcs	0640			0641	0642	0643	
	HP 1 pcs							0645
	CA 3 pcs	0658	0662	0663	0661			
<b>ZiLMaster Medium</b>	HP 3 pcs	0646			0647	0648	0649	
	HP 1 pcs							0651
	CA 3 pcs	0665	0659	0668	0666			
<b>ZiLMaster Fine</b>	HP 3 pcs	0652			0653	0654	0655	
	HP 1 pcs							0657
	CA 3 pcs	0670	0672	0673	0671			

## COMPOMASTER COARSE - COMPOMASTER

Diamond impregnated polishers designed with a unique blend and high density of natural diamond particles to provide an exceptionally smooth surface on any composite material.

### Benefits -

- Uniformly blended Diamond particles in a resilient silicone offers precise concentricity and produce remarkable lustre and gloss over the restoration giving it life like aesthetics
- This diamond impregnated silicone polisher is available in two grits:

**CompoMaster Coarse** (yellow polisher) - For finishing & basic polishing CompoMaster

**Regular**(yellow & white bands) - For superpolishing

- Provides a simple, fast and efficient polishing and super polishing for intra oral, chair side or laboratory use
- Durable and cost effective two-step polishing system, available in HP and CA shank
- Eliminates the need of any messy Polishing paste



### Indications -

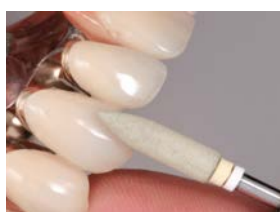
High End Polishing of Composite restorations

### Ordering Information :

CompoMaster Coarse - CompoMaster

PACKAGING	QTY	PN
Coarse - HP	3 pcs	116C-119C
Coarse Unmounted Wheel - HP	1 pc	131C
Compomaster - HP	3 pcs	0116-0119
Coarse HP	4 pcs Assortment	120C
Regular HP	4 pcs Assortment	0120

## COMPOMASTER COARSE - COMPOMASTER



	Shape	Bullet	Knife	Cup	Minipoint	KN7	WH6	Unmounted Wheel
	ISO NO.	040	090	065	030	125	120	220
<b>CompoMaster Coarse</b>	<b>HP</b>	116C			119C	117C	118C	131C
	<b>CA</b>	111C	112C	113C	114C			
<b>CompoMaster</b>	<b>HP</b>	0116			0119	0117	0118	
	<b>CA</b>	0111	0112	0113	0114			

Recommended Speed Range (Mounted Polisher) : 5,000 - 15,000 rpm / Max. 20,000 rpm, Contact Pressure : 0.5 N

Recommended Speed Range (Unmounted Wheel) : 5,000 - 10,000 rpm / Max. 15,000 rpm, Contact Pressure : 0.5 N

Usage note : Intra-oral polishing is done under dry conditions with intermittent strokes and stream of compressed cool air to avoid excess overheating of the pulp.

## BROWNIE, GREENIE & SUPER GREENIE

These popular silicone polishers are impregnated with high quality polishing ingredients for fast, brilliant polishing of amalgam, gold and cast alloys.

### Benefits :

- High gloss polish achieved in 3 coordinated steps
- Brownies, greenies and super greenies are autoclavable or can be disinfected in cold sterilization and doesn't require any polishing paste or pumice
- Precise concentricity with low vibrations & minimal heat generations
- Fast efficient & durable for consistent performance overtime
- Mini-points are recommended for polishing occlusal surfaces and Cups for proximal and occlusal areas; both available in CA / FG shank



### Packaging :

Individual shapes are packed in a box of 12's

### Indications :

- Ideal for chairside & in lab for prepolishing, polishing & high gloss polishing of metallic restorations
- Brownies - for achieving a smooth surface
- Greenies - for a lustrous polish
- Super greenies (with yellow band) - for a final super polish

### Ordering Information :

Brownie, Greenie & Supergreenie

PACKAGING	QTY	PN
Brownie, Greenie, Supergreenie KN7, PC2, WH6 x HP	12 pcs	0271-0279
Brownie, Greenie, Supergreenie Unmounted Wheels	12 pcs	0453, 0454, 0454A
Brownie, Greenie Floppie x HP	12 pcs	0458-0459

### Recommended Speed Range :

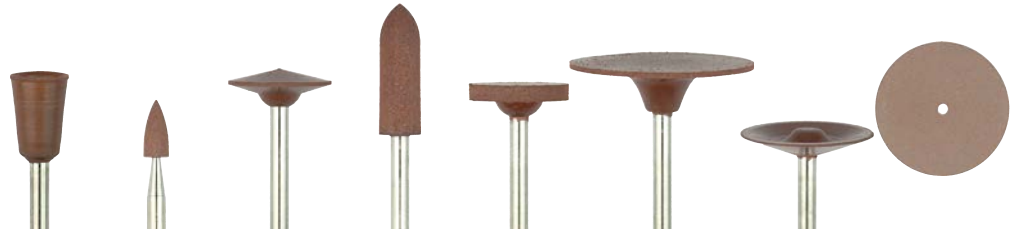
5000 - 7000 rpm

Contact pressure : 1-2 N





## BROWNIE, GREENIE & SUPER GREENIE



	Shape	Cup	Minipoint	KN7	PC2	WH6	Floppie	Disk	Unmounted Wheel
	ISO NO.	065	030	125	050	120	220	160	220
Brownie	HP 12 pcs			0271	0272	0273	0458		0453
	CA 12 pcs	0401	0403	0281	0282	0283		0405	
	FG 12 pcs	0411	0413						
Greenie	HP 12 pcs			0274	0275	0276	0459		0454
	CA 12 pcs	0402	0404	0284	0285	0286		0406	
	FG 12 pcs	0412	0414						
Supergreenie	HP 12 pcs			0277	0278	0279			454A
	CA 12 pcs	402A	404B	0287	0288	0289			
	FG 12 pcs	412A	414B						

## SOFT CUT

Impregnated with silicon carbide abrasive grit for use on porcelain or indirect composite.

### Benefits :

- Recommended for polishing porcelain surfaces prior to glazing to lower the firing temperature and enhance aesthetics
- Fine finishing & polishing in just one step
- Lighter the pressure higher the gloss
- Uniform concentricity for minimal vibration
- Low heat generation minimizes risk of porcelain micro fracture

### Indications :

- Soft Cut has been specially created for contouring & polishing porcelain and indirect composite restorations
- Available in 2 polishing grits:
- PA grit (green band) - for fine finishing & smoothening after finishing with Dura-Green Stones
- PB grit (blue band) - for polishing after fine finishing

### Ordering Information :

SoftCut Polishers

PACKAGING	QTY	PN
PA/PB - HP x PC2,WH6	12 pcs	0563-0565
PA/PB - HP x Unmounted wheel	12 pcs	0595-0596



### Packaging :

Individual shapes packed in a box of 12's

### Recommended Speed Range :

Mounted Polisher - 5000 - 20,000 rpm/ Max 20,000 rpm

Unmounted Polisher - 5000 - 15,000 rpm/ Max 15,000 rpm

Contact pressure : 1-2 N

	Shape	PC2	WH6	Unmounted Wheel
	ISO NO.	050	120	220
SoftCut PA	HP		0564	0595
SoftCut PB	HP	0563	0565	0596



## CERAMISTE

Impregnated with silicon carbide in high grade silicone,ceramiste polisher is designed for polishing porcelain & enamel to achieve a glazed-like polish.

### Benefits :

- Low contact pressure, less heat generation
- Uniform concentricity
- Autoclavable & durable
- Cups and midi-points available (CA & FG shank only)
- All other shapes (HP, CA shank & Unmounted Wheels)

### Indications :

- Designed to achieve a glazed like polish on porcelain & enamel
- Standard Polishers - for pre-polishing
- Ultra (yellow band) - for polishing
- Ultra II (white band) - for super polishing to a glazed-like surface

### Ordering Information :

Ceramiste Polishers

PACKAGING	QTY	PN
HP x KN7,PC2,WH6	12 pcs	0261-0269
Unmounted Wheel	12 pcs	0451,0452, 0452A

	Shape	Bullet	Cup	Knife	Wheel	Midipoint	KN7	PC2	WH6	Unmounted Wheel
	ISO NO.	040	065	090	090	060	125	050	120	220
Standard (prepolish)	HP						0261	0262	0263	0451
	CA	0251	251A	0252	0253	253A				
	FG		251B			253B				
Ultra (polish)	HP						0264	0265	0266	0452
	CA	0254	254A	0255	0256	256A				
	FG		254B			256B				
Ultra II (superpolish)	HP						0267	0268	0269	452A
	CA	0257	257A	0258	0259	259A				
	FG		257B			259B				



### Packaging :

Individual shapes packed in a box of 12's

### Recommended Speed Range :

10,000 - 12,000 rpm/ Max FG Shank 20,000 rpm

Max HP/CA Shank 15,000 rpm

Contact pressure : 1-2 N

## DURA-POLISH

An aluminium oxide impregnated (73% by weight) polishing wax that imparts a homogenous surface on a range of restorations.

### Benefits :

- Pre polishes indirect composite materials efficiently due to its high degree of abrasiveness and specific particle size
- Inclusion of three different grit of alumina particles ensures that scratches are eliminated easily
- Adhesive character of the paste ensures maximum surface contact
- Optimal paste viscosity minimizes splattering



### Indications :

- Designed for pre polishing of indirect composite restoration and super polishing hard resin, denture base resin and all kinds of dental metals.
- For extra oral use, used best with Robinsons brush/buff Wheels in HP shank



### Ordering Information :

Dura-Polish

PACKAGING	PN
20 gm	0552

### Packaging :

Packed in a jar of 20g

### Recommended Speed Range :

Max 10,000 rpm

## DURA-POLISH DIA

A diamond impregnated (67% by weight) polishing wax for high lustre polish.

### Benefits :

- Composed of a high density of ultra fine diamond particles (less than 1micron in size) for excellent results
- Special formulation of the Polishing wax assures that DURA-POLISH DIA is easy to apply on the brush or buff and also retains for a long time for efficient polishing
- Optimal paste viscosity minimizes splatter



### Indications :

- Designed to provide a consistent and exceptionally high gloss polish on indirect composites, porcelain and zirconia as well as hard resins and alloys
- For extra oral use, used best with Robinsons brush/buff Wheels in HP shank



### Ordering Information :

DURA-POLISH DIA

PACKAGING	PN
5 g	0554

### Packaging :

Packed in a jar of 5g

### Recommended Speed Range :

Max 10,000 rpm

## FISSURE CARBIDE BURS HP/FG

Specially designed carbide burs in HP & FG Shank with unique trigonal pyramid shaped tip or perfect pointed end.

### Benefits

- Special three blade tip design is highly abrasive with superior cutting efficiency for precise replication of intricate surface details
- Made of high grade tungsten carbide for remarkable durability
- Fissure carbide in FG shank used with lab Air Z is preferred by ceramists for anatomical Carving
- Fissure carbide in HP shank is used for carving of Indirect composites (eg. Ceramage) as well as acrylic dentures



### Indications

- Anatomic carving of pit and fissure
- Minor adjustment of interproximal areas of ridges fabricated with porcelain, Indirect composite, hard resin, Denture Base Acrylic and range of dental alloys
- Trimming of interdental papilla of dentures

### Ordering Information :

Fissure Carbide Burs HP/FG

PACKAGING	PN
HP	5945
FG	5946



### Packaging

Individually packed in box of 6's (HP)  
Individually packed in box of 3's (FG)

### Recommended Speed Range :

25,000 - 4,50,000 rpm (FG)



## 9.MISCELLANEOUS



## SHOFU ADJUSTER

Specially created to be used with dura green dia.

### Benefits :

- Easy to adjust shape just by pressing the rotating dura green dia against the entire surface of the Shofu Adjuster
- Designed to be held in the box for added safety during use.



### Indications :

Used to adjust the shape of dura green dia abrasive

### Packaging :

Individually packed

### Ordering Information :

SHOFU ADJUSTER

PACKAGING	PN
One Block	0504

## DIAMOND DRESSER

rectangular diamond coated cleaning & reshaping instrument.

### Benefits :

Multiple layers natural diamond particles are electrocoated on the dresser that assures durability and prevents clogging to maintain cutting efficiency.



### Indications :

A diamond-coated instrument specially designed for easy cleaning and precise reshaping of all abrasive stones and polishers.

### Packaging :

Individually packed

### Ordering Information :

DIAMOND DRESSER

PACKAGING	PN
One Piece	0781



## PORCELAIN BRUSHES

A specially designed new range of Porcelain Brushes for use during routine Porcelain Build-up to satisfy the needs of the technician.

The sable fiber and red wood handles ensure better control and easy application.

### Ordering Information :

Porcelain Brushes

MODEL NO	PN
Set	6985
OP0	6986
P3	6991
P5	6992
P7	6993
S0	6988
S1	6989



### Packaging :

Porcelain Brush Set contains Brushes x 6 (No.OP0, No.P3, No.P5, No.P7, No.S0, No.S1)

Refill brushes are individually packed

## VINTAGE SHADE GUIDE

Based on VITA classical color system, the new vintage shade guide from Shofu, offers 16 plus 5 additional shades for a precise and efficient patient-specific Shade Selection.

### Benefits :

- This comprehensive shade guide includes a total of 21 shades - 16 well known shades A1 to D4, supplementary chroma intensive shade rootA and 4 bleaching shades (W0 to W3)
- The modern user friendly design with the segmented shade groups of W, A, B, C, D ensures easy shade selection



### Packaging

Available as porcelain & resin type.

### Ordering Information :

VINTAGE SHADE GUIDE

TYPE	PN
Porcelain	9620
Resin	9621

## UNI BRUSH

### NYLON BRISTLED BRUSHES FOR DETAILING COMPOSITE RESTORATIONS

#### Benefits :

- Precisely clustered Fine Bristles provides Universal Application and allows to produce accurate details thus Individualizing the Restoration.
- Available in 2 different Bristle Sizes

#### Indications

Easy application of direct & indirect composites

Creating individual characterisations with opaquer and Tints

#### Ordering Information :

UNI BRUSH

PACKAGING	PN
NO.4	1586
NO.5	1988



#### Packaging

No 4, Box of 10 with handle

No 5, Box of 10 with handle

## SOLIDILITE 250 V

Solidilite V, the new generation indirect light curing unit features a compact, user friendly, sturdy yet ergonomic design with an integrated fan and a protective soft start cure mode to optimize efficient light polymerization of indirect composites such as CERAMAG and Solidex.

### Benefits :

- Easily operated
- Three light exposure programmes (1 / 3 / 5 min) as well as individual settings
- Shadowless curing of the objects
- Efficient heat conduction system
- Electronic counting of operating hours
- Soft- start function
- A manual selection option with a curing duration ranging from 10 seconds to 20 minutes with 10 second intervals is available



### Indications :

Polymerization of indirect composites such as Ceramag and Solidex

PACKAGING - 1 Unit

### Ordering Information :

Solidilite 250 V

PACKAGING	PN
1 Unit	5160

### TECHNICAL SPECIFICATIONS -

Dimensions: W 230 mm x D 252 mm x H 354 mm

Weight: approx. 9.5 kg

Supply voltage: 200 V-240 V, 50/60 Hz

Fuse: 2 x 3.15 A time-lag

Lamp: 4 JCR 110V 150 W halogen lamps

Spectral range: 400-550 nm

## SUBLITE V

Sublite V is an easy to operate, hand activated temporary light curing unit with an integrated fan designed for initial or pre-polymerization of the indirect composite during build up of the restoration, without the need to remove the restoration from the model.

### Benefits :

- Sublite V indirect light curing units are simple to operate and help to save valuable time by optimizing cure within a short time frame
- Time-saving pre-polymerisation on the working model
- Convenient one hand operation
- Two light exposure programs (5 sec / max. 20 sec) Light guard horizontally and vertically adjustable



### Indications :

- Pre-polymerization of the indirect composite during build up of the restoration

### Ordering Information :

Sublite V

PACKAGING	PN
1 Unit	5180

### Packaging :

- 1 Unit

### TECHNICAL SPECIFICATIONS -

Dimensions: W 112 mm x D 210 mm x H 252 mm

Weight: approx. 2.5 kg

Supply voltage: 200 V-240 V, 50/60 Hz

Fuse: 2 x 1.6 A time-lag

Lamp: 1 JCR 110V 150 W halogen lamp

Spectral range: 400-550 nm

## HALOGEN LAMP

SHOFU JCR 110V 150W halogen lamps, with a light wave spectrum of 400-550 nm, guarantee efficient and secure curing in the compact polymerisation chamber of the Solidilite V & Sublite V Units.

The halogen lamps will reach full power after 2 to 4 seconds

### Ordering Information :

Halogen Lamp

PACKAGING	PN
1 Unit	5160



### Packaging :

Individual Lamp

## POST STAND P & POST SET

### POST STAND P

- Includes two crossing central ditches extending down to the bottom of the Post Stand
- More than 100 holes are combined with the matching pins
- Thus allows an exceptionally fast and simple positioning of the restorations, from single crowns up to 14 unit bridges
- Dimensions: ø 60 mm / h 23.5 mm

### POST SET

The set includes five different shapes, 3 each, for any kind of restoration:

- Anterior Post A - (cone shaped) for anterior crowns
- Anterior Post B - (wedge shaped) for anterior crowns
- Posterior Post A - for premolars
- Posterior Post B - for molars
- Free Post - can be grinded to any desired shape

By the Decentralised shanks and rotatability the space between the posts can be individually adjusted

### INDICATIONS -

For stable placement of restorations in dental lab light-curing units

### Ordering Information :

Post Stand P & Post Set

PACKAGING	PN
Post Set (Long Type)	5058
Post Stand P	5059



**PACKAGING -**  
**1PCS.**

## CERAMOSONIC S

### ULTRASONIC CONDENSING UNIT FOR PORCELAIN BUILD-UP

A compact condenser designed for easy and reliable porcelain condensation during porcelain veneering of all-ceramic and metal-based restorations.

Use of high frequency micro vibrations (28,000 vibrations / sec), enhance condensation and ensure that the micro-fine particles are densely packed to prevent deformation of the layer structure.

#### Benefits :

- Ultrasonic vibrations improve porcelain substructure, removes air bubbles, increases density to minimize shrinkage and cracking during firing
- Reduces shrinkage to less than 5%
- It includes a touch sensor for ease of operation and ideal for use with all ceramic porcelain materials to minimize firing shrinkage and offers both auto and continuous mode
- Augments translucency and enhances density
- Adjustable vibration up to 28,000 Hz allows for customized build-up techniques
- Touch sensor automatically activates vibration when platform is contacted
- Choice of automatic (5 seconds) and continuous (120 seconds) vibration modes



**Packaging :**  
1 UNIT

#### Specifications :

Power supply: AC 100-240V  $\pm 10\%$  & 50/60 Hz, Dimension: 160 (W) x 140 (D) x 110 (H) mm.

#### Indications :

Ultrasonic condensing of the moist porcelain buildup before firing

#### Ordering Information :

Ceramasonic S

PACKAGING	PN
1 Unit	5064

## LAB AIR Z (OIL-LESS) HANDPIECE SET

High performance air turbine handpiece for effortless carving of porcelain and indirect composite restorations.

### Benefits :

- Rugged precision instrument designed for extensive dental laboratory use without requiring any lubrication
- Light weight and well balanced (79g) for maximum hand comfort
- Whisper quiet operation
- Delivers dependable high speed of up to 350,000 rpm with ideal torque
- Unique air cap to direct air away from work area
- Recommended air pressure of 0.22- 0.25 Mpa
- Easy bur changing system for Friction-grip burs



### Indications :

Effortless carving of porcelain and indirect composite restorations

### Ordering Information :

LAB AIR Z ( Oil-Less )  
HANDPIECE

### Packaging :

Individually packed as Lab Air-Z Oil-free HANDPIECE Set

Accessories

Lab Air-Z Oil-Free Cartridge

Chuck Air-Z Oil-Free

Lab Air-Z W-Tubing

Cartridge Tool for Lab Air-Z

PACKAGING	PN
Handpiece Set	5320
Cartridge	5321
Chuck	5222
Tubing	916905
Cartridge Tool	5224



---

**SHOFU DENTAL INDIA PRIVATE LIMITED**

D-3/3, OKHLA INDUSTRIAL AREA, PHASE- II, NEW DELHI, 110020 INDIA  
TEL: (91) 11494 41400 FAX: (91) 11494 41401 E-mail: [info@shofudental.co.in](mailto:info@shofudental.co.in)